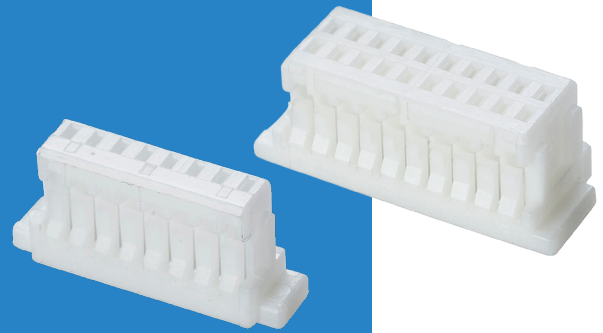


M40 Cable-to-Board Connectors

Female Crimp Housings

- ❏ Crimp contacts or pre-cabled contacts are ordered separately - see following pages.
- ❏ Crimped contacts on wires are inserted into rear of connector housing - no additional tooling required.



1mm (.039") PITCH

SINGLE ROW	CALCULATION	DOUBLE ROW	CALCULATION
	A B + 4		A B + 4
	B No. of contacts per row - 1		B No. of contacts per row - 1

HOW TO ORDER

M40 - 1X0 XX 00

SERIES CODE

TYPE

110	Single Row
120	Double Row

NO. OF CONTACTS PER ROW

02 to 20	Single Row
05 to 10, 12, 15, 20, 25	Double Row

All dimensions in mm.