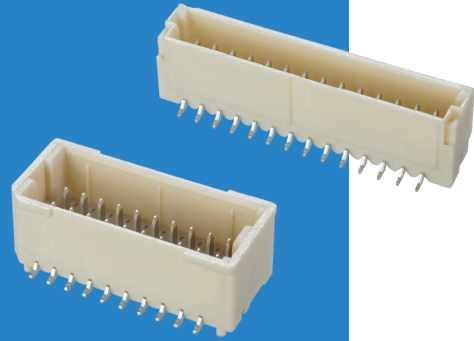


M40 Cable-to-Board Connectors

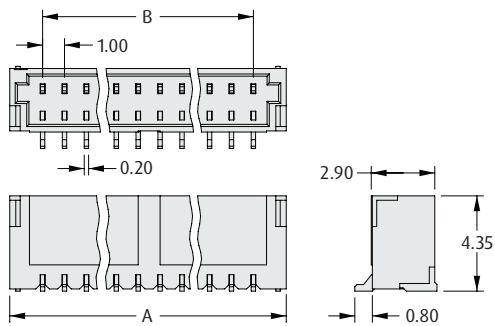
Male Vertical Surface Mount

- ❖ Shrouded male connectors.
- ❖ Double row connector features locating pegs to ensure correct positioning onto the board.
- ❖ Tape and Reel option supplied fitted with pick and Place cap.



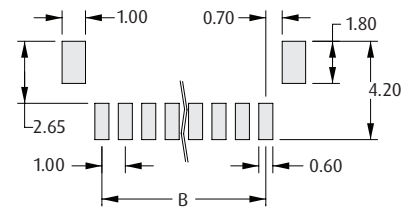
1mm (.039") PITCH

SINGLE ROW



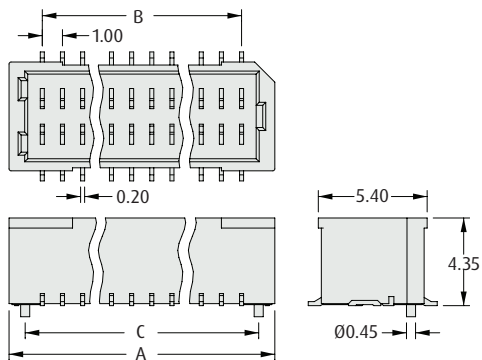
CALCULATION

A	$B + 3$
B	No. of contacts per row - 1



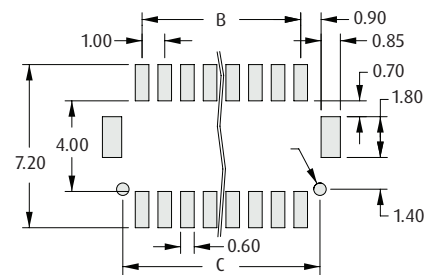
Recommended PC Board Pattern

DOUBLE ROW



CALCULATION

A	$B + 3$
B	No. of contacts per row - 1
C	$B + 1.7$



Recommended PC Board Pattern

HOW TO ORDER

M40 - 30 X XX 46 X

SERIES CODE

TYPE

1	Single Row
2	Double Row

PACKAGING

Blank	Loose
R	Tape & Reeled

FINISH

46	Tin
-----------	-----

NO. OF CONTACTS PER ROW

02 to 20	Single Row
05 to 08, 10, 12, 15	Double Row

All dimensions in mm.