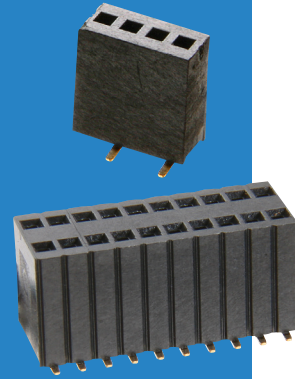


Archer Connectors – M52

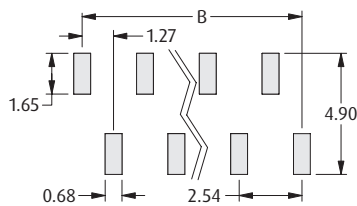
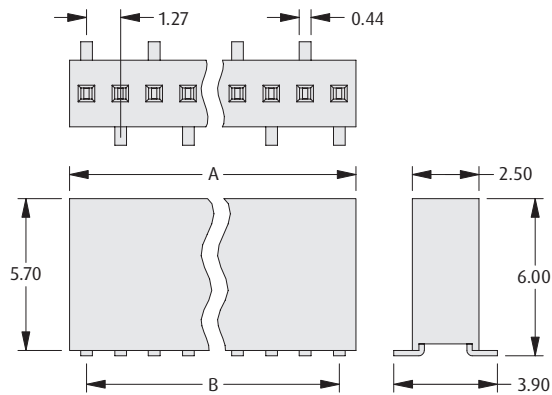
Female Vertical Surface Mount

- Suitable for use with male pin headers with 0.46mm square pins.
- Twin beam contact for cost-effective reliability.



1.27mm (.050") PITCH

SINGLE ROW

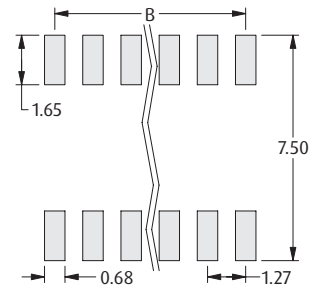
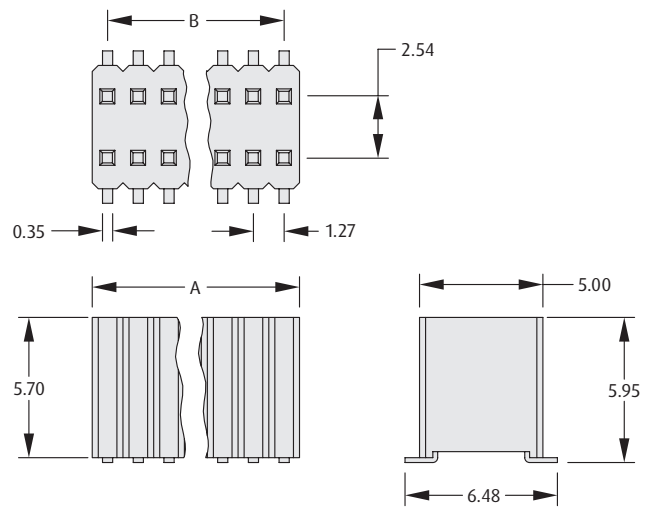


Recommended PC Board Pattern

CALCULATION

A	$1.27 \times \text{No. of contacts per row}$
B	$1.27 \times (\text{No. of contacts per row} - 1)$

DOUBLE ROW



Recommended PC Board Pattern

HOW TO ORDER

M52 - 5 X 5 XX 45

SERIES CODE

TYPE

0	Single Row
1	Double Row

FINISH

45 Gold

NO. OF CONTACTS PER ROW

03 to 10, 12, 15, 20, 25

All dimensions in mm.