

METALLIZED POLYPROPYLENE FILM CAPACITOR
SELF-HEALING PROPERTIES

CLASS X2 (EN132400)

Features

- 1) For interference suppression and < across-the-line >.
- 2) Light and small in size.
- 3) Pitch 10mm available now for 0.010 to 0.047μF.



Specifications

Temp. Range	-40 to +110°C	
Rated Voltage	275V.a.c.	
Capacitance	0.010 to 4.7μF (E-6)	
Cap. Tolerance	±10%(K), ±20%(M)	
Tangent of Loss Angle	0.001 or less (at 25°C ±5 1KHz)	
Withstand Voltage	Between Terminals	1500V.a.c. 1min.
	Between Terminals	1810V.d.c. 1min.
	Between Terminals and Case	2500V.a.c. 2sec.
Insulation Resistance	Between Terminals	C ≤ 0.33μF 100,000MΩ or more
		C > 0.33μF 30,000S (ΩF)
Impulse Voltage	IEC 60384-14 amendment A1: 1995 2nd Ed.'93(EN 132400)PV ≤ 2.5kV	

Approvals

ENEC-IMO EN132400 CB	Class X2	File No. V4413 File No. IT-1524
CSA C22.2No1 (up to 1μF)	Across-the-line	File No. LR83890
UL 1414 (up to 1μF)	Across-the-line	File No. E97797
UL 1283 (310 Vac)	Electromagnetic Interference Filters	File No. E85238
CCEE IEC60384-14	Class X2	File CH0045034-2000

CSA and UL 1414 for 250V.a.c. only.
Approved according to EN 132400 (IEC 60384-14 2nd edition 1993 pulls Amendment A1: 1995).
According to IEC 60065.

Dimensions(mm)

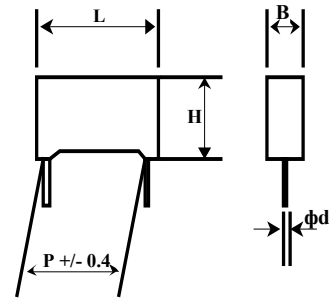
Cap. (μF)	B	H	L	P	φd	Max dv/dt at 390V.d.c. (V/μs)	PARTS NO.
0.010	5.0	11.0	13.0	10.0	0.6	5000	R46 KF 2100-M1-
0.015	5.0	11.0	13.0	10.0	0.6	5000	R46 KF 2150-M1-
0.022	5.0	11.0	13.0	10.0	0.6	5000	R46 KF 2220-M1-
0.033	5.0	11.0	13.0	10.0	0.6	5000	R46 KF 2330-M1-
0.047	6.0	12.0	13.0	10.0	0.6	5000	R46 KF 2470-M1-
0.068	6.0	12.0	13.0	10.0	0.6	5000	R46 KF 2680-M1-
0.10	6.0	12.0	13.0	10.0	0.6	5000	R46 KF 3100-M1M
0.010	5.0	11.0	18.0	15.0	0.6	4000	R46 KI 2100-01-
0.015	5.0	11.0	18.0	15.0	0.6	4000	R46 KI 2150-01-
0.022	5.0	11.0	18.0	15.0	0.6	4000	R46 KI 2220-01-
0.033	5.0	11.0	18.0	15.0	0.6	4000	R46 KI 2330-01-
0.047	5.0	11.0	18.0	15.0	0.6	4000	R46 KI 2470-01-
0.068	5.0	11.0	18.0	15.0	0.6	4000	R46 KI 2680-01-
0.10	5.0	11.0	18.0	15.0	0.6	4000	R46 KI 3100-M1M
0.10	6.0	12.0	18.0	15.0	0.6	4000	R46 KI 3100-01-
0.15	6.0	12.0	18.0	15.0	0.6	4000	R46 KI 3150-M2M
0.15	7.5	13.5	18.0	15.0	0.6	4000	R46 KI 3150-M1-
0.15	9.0	12.0	18.0	15.0	0.6	4000	R46 KI 3150-L2-
0.22	6.0	17.5	18.0	15.0	0.6	4000	R46 KI 3220-02-
0.22	7.5	13.5	18.0	15.0	0.6	4000	R46 KI 3220-M2M
0.22	8.5	14.5	18.0	15.0	0.6	4000	R46 KI 3220-M1-
0.22	9.0	12.5	18.0	15.0	0.6	4000	R46 KI 3220-L2
0.33	7.5	18.5	18.0	15.0	0.8	4000	R46 KI 3330-02-
0.33	10.0	16.0	18.0	15.0	0.8	4000	R46 KI 3330-M1-
0.33	13.0	12.0	18.0	15.0	0.8	4000	R46 KI 3330-01-
0.47	11.0	19.0	18.0	15.0	0.8	4000	R46 KI 3470-M1-
0.15	6.0	15.0	26.5	22.5	0.8	2000	R46 KN 3150-01-
0.22	6.0	15.0	26.5	22.5	0.8	2000	R46 KN 3220-M1-
0.33	7.0	16.0	26.5	22.5	0.8	2000	R46 KN 3330-M1-
0.47	8.5	17.0	26.5	22.5	0.8	2000	R46 KN 3470-M1-
0.47	10.0	18.5	26.5	22.5	0.8	2000	R46 KN 3470-01-
0.68	10.0	18.5	26.5	22.5	0.8	2000	R46 KN 3680-M2-
0.68	11.0	20.0	26.5	22.5	0.8	2000	R46 KN 3680-M1-
1.0	13.0	22.0	26.5	22.5	0.8	2000	R46 KN 4100-M1-
0.47	9.0	17.0	32.0	27.5	0.8	150	R46 KR 3470-01-
0.68	9.0	17.0	32.0	27.5	0.8	150	R46 KR 3680-M1-
0.68	10.0	20.0	32.0	27.5	0.8	150	R46 KR 3680-01-
1.0	11.0	20.0	32.0	27.5	0.8	150	R46 KR 4100-M1-
1.5	13.0	22.0	32.0	27.5	0.8	150	R46 KR 4150-M1-
1.5	15.0	24.5	32.0	27.5	0.8	150	R46 KR 4150-01-
2.2	14.0	28.0	32.0	27.5	0.8	150	R46 KR 4220-M1-
2.2	18.0	33.0	32.0	27.5	0.8	150	R46 KR 4220-01-
3.3	18.0	33.0	32.0	27.5	0.8	150	R46 KR 4330-M2-
3.3	22.0	37.0	32.0	27.5	0.8	150	R46 KR 4330-M1-
4.7	22.0	37.0	32.0	27.5	0.8	150	R46 KR 4470-M1-
2.2	13.0	24.0	41.5	37.5	1.0	100	R46 KW 4220-M1-
3.3	16.0	28.5	41.5	37.5	1.0	100	R46 KW 4330-M1-
4.7	19.0	32.0	41.5	37.5	1.0	100	R46 KW 4470-M1-
5.6	22.0	40.0	41.5	37.5	1.0	100	R46 KW 4560-M1M

Lead/Taping Configuration	Lead Length (mm)	Taping Style			Lead/Taping Configuration Code
		P2(mm)	Fig.(No.)	Pitch(mm)	
Ammo-Pack	4 +/- 0.5	12.70	1	10.0/15.0	DQ
Ammo-Pack		19.05	2	22.5	DQ
Reel φ355mm		12.70	1	10.0/15.0	CK
Reel φ500mm		19.05	2	22.5/27.5	CK
Bulk, Short Leads	4 +/- 0.5				JP
Bulk, Long Leads	24 +/- 3				55
Bulk, Long Leads	30 +/- 5				45
Bulk, Insulated Rigid Leads	30 +/- 5				51
Bulk, Insulation Flexible Lead	150 +/- 5				52

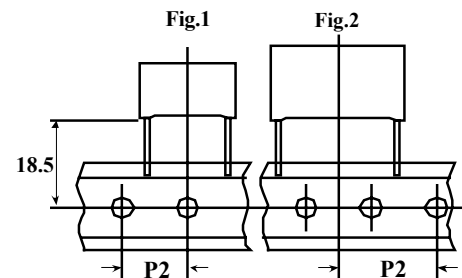
* Ammo-packed is the preferred packaging for taped version.

When using our capacitors, please consider the application notes and contact Nissei for any additional technical specifications relating to the limits of our performance characteristics.

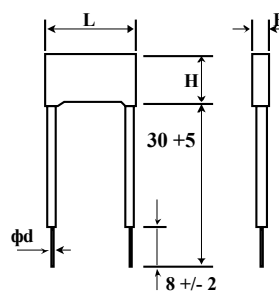
Bulk



Taped



Insulated Rigid Leads



Insulated Flexible Leads 0.5mm

