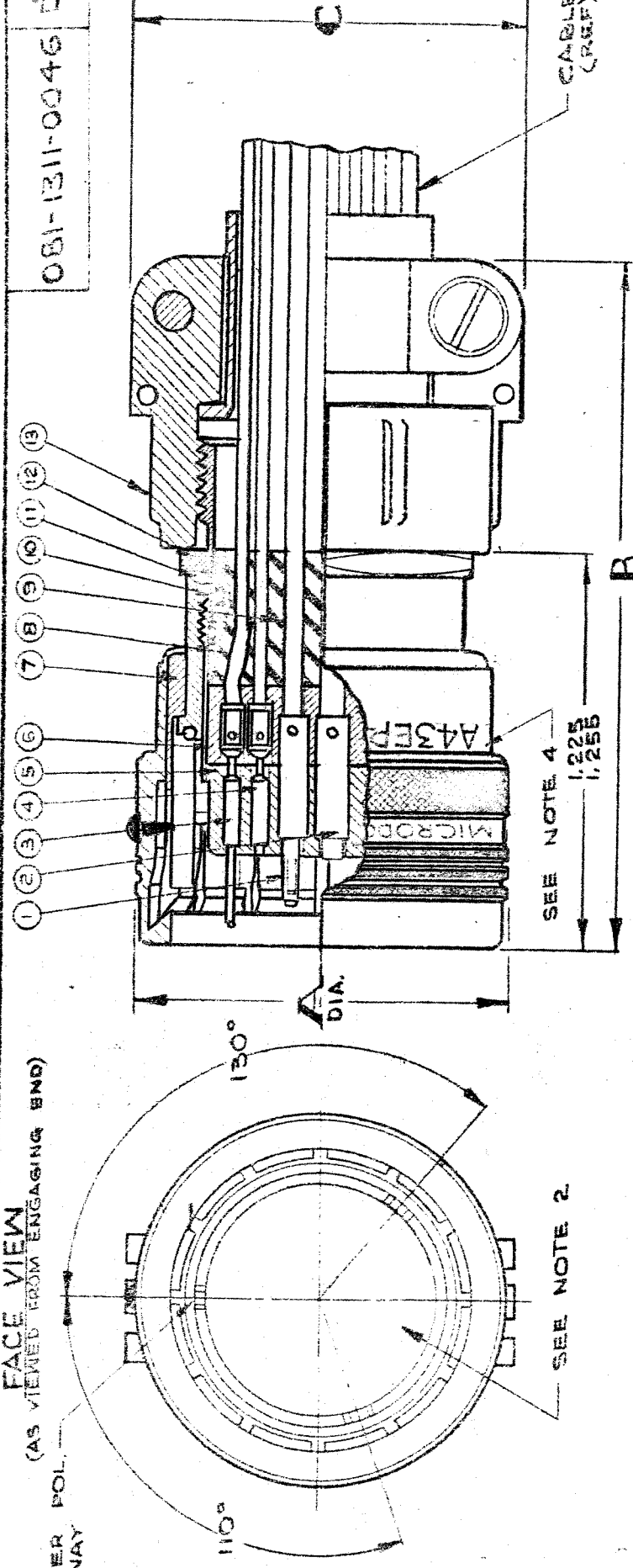


MASTER KEYWAY POL. (AS VIEWED FROM ENGAGING END)



081-1311-0046

SEE NOTE 2

CODE	ITEM	DESCRIPTION	CATALOG NO.	A	B	C
A43	1	CONTACT, PIN COAXIAL	A43*P -** (046)	.760	2.062	.812
A43		HOUSING	B43*P -** (046)	.947	2.145	1.062
A43		SOCKET (INNER CONTACT)	C43*P -** (046)	1.135	2.195	1.170
		BUSHINGS				
		JERK RINGS				
		CONTACT, SOCKET COAXIAL				
		HOUSING & JERK RINGS				
		PIN (INNER CONTACT)				
		BUSHINGS				
		CONTACT, PIN POWER				
		CONTACT, SOCKET POWER (#12 & #16 GAGE)				
		CONTACT, SOCKET POWER (#22 GAGE)				
		INSERT, FRONT				
		INSERT, REAR				
		PLUG, SUB ASSEMBLY				
		RING, COUPLING & PLUG SHELL				
		SPRING, LOCKING				
		KEY				
		"O" RING				
		FOLLOWER, SUB ASSEMBLY				
		FOLLOWER				
		SPRING				
		SRONMET (SEALED ONLY)				
		"O" RING, FOLLOWER (SEALED ONLY)				
		"O" RING, RET. NUT (SEALED ONLY)				
		ADAPTER				
		STRAIGHT CABLE CLAMP (AN 3057)				

CODE	STANDARD MATERIAL & FINISH
△	ALUMINUM ALLOY QQ-A-225/5, TEMPER T4
△	F. M. BRASS QQ-B-626, COMP. 360 1/2 HARD
△	COIN SILVER HARD TEMPER MIL-S-11282
△	LEADED COPPER
△	BERYLLIUM COPPER (BERYLCO 10) H.T.
△	BERYLLIUM COPPER QQ-C-530, 1/2 HARD
△	BERYLLIUM COPPER QQ-C-533, 1/2 HARD
△	DIALYL FTHALATE MIL-M-14, SDG
△	TELON AMS-3651 & MIL-P-19468
△	SILICONE RUBBER MIL-R-5847, CLASS II
△	GOLD PLATE MIL-G-45204, TYPE II, CLASS I
△	GOLD PLATE MIL-G-45204, TYPE II, CLASS II
△	SILVER PLATE .0002-.0004, QQ-S-365, TYPE I, CR. I
△	ELECTROLESS NICKEL .0002-.0004 MIL-G-26074, CU. 2
△	ALUMINUM ALLOY QQ-A-225/6, TEMPER T4
△	CLEAR ANODIZE MIL-A-8625, TYPE II
△	STAINLESS STEEL MIL-S-7720, TYPE 303
△	PASSIVATE & BLACK OXIDE MIL-C-13924, CLASS III

INSULATION RESISTANCE: 5K MEGOHMS MINIMUM PER MIL-STD-202, METHOD 302, CONDITION B.  
 PHYSICAL SHOCK: 50 G'S MINIMUM PER MIL-C-26500B  
 10 MICROSECONDS MAXIMUM OPEN TIME.  
 VIBRATION: 15 G'S 10-2000 CPS PER MIL-C-26500B  
 10 MICROSECONDS MAXIMUM OPEN TIME.  
 HUMIDITY: EXCEEDS MIL-C-26482 WHEN TESTED TO MIL-STD-202B, METHOD 106A (SEALED CONNECTOR ONLY). TEMPERATURE RATING: -67°F TO + 257°F.

ENVIRONMENTAL CHARACTERISTICS

CORROSION: 48 HOURS MINIMUM PER MIL-C-26500B (SEALED CONNECTOR ONLY).  
 DIELECTRIC WITHSTANDING VOLTAGE: 1000 V RMS TEST & 750 V RMS WORKING AT SEA LEVEL; 300 V RMS WORKING AT 70,000 FEET. (A.C. RMS)  
 CONTACT RATING: SEE CATALOG FOR CONTACT SIZE, CURRENT RATING, & WIRE SIZES.  
 TEMPERATURE RATING: -67°F TO + 257°F.

- CONNECTOR CATALOG NUMBER WILL BE STAMPED PER M.E.P. # 203-05 IN AREA INDICATED.
- RECOMMEND ORDERING: PIN CONTACTS (POWER OR COAXIAL) WITH RECEPTACLE CONNECTOR; SOCKET CONTACTS (POWER OR COAXIAL) WITH PLUG CONNECTOR
- SEE CATALOG FOR COMPLETE ORDERING INFORMATION, VARIOUS LAYOUTS, AND ALTERNATE PIN POSITIONS
- THIS IS A GENERAL SPECIFICATION CONTROL DRAWING AND DRAWING NUMBER SHOULD NOT BE USED FOR ORDERING. ORDERS PLACED BY "CATALOG NUMBERS ONLY."

TYPICAL MULTIPIN CATALOG NUMBER SEE NOTE 2

A 43 SERIES E-SEALED SHELL TYPE P - 2 LAYOUT CONTACT TYPE S - 14 (046) SPECIAL MODIFICATION

P1235

NO. REV'D	ASSEMBLY	REVISION DESCRIPTION	BY	DATE	APP
D	306	ADDED "0046" TO DWG #	EM	1/20/64	
C		CHANGED FROM MIL-C-26500B TO MIL-C-26500A			
B		CHANGED FROM MIL-C-26500A TO MIL-C-26500B			
A	1	R/E 7 - WAS .0003-.0004			
LET	ECO	REVISION DESCRIPTION			

PROG. CODE	DATE	BY
99A	DEC 3 1964	

ATT. POSITION	IF REQ'D
CONTACT TYPE	(SEE NOTE 3)

SURFACE TREATMENT	
NOTED	

MATERIAL	
NOTED	

PLUG, PUSH-FULL COUPLING WITH CABLE CLAMP (046) MOD.	
3-2-64	

APPROVED	DRAWN BY	DATE

ORDERING INFORMATION
081-1311-0046

**MICRODOT INC.**  
 SOUTH PARKWAY  
 SURFACE TREATMENT NOTED