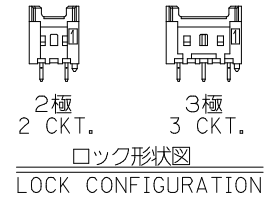
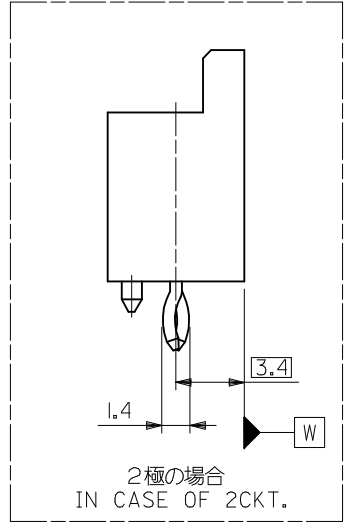
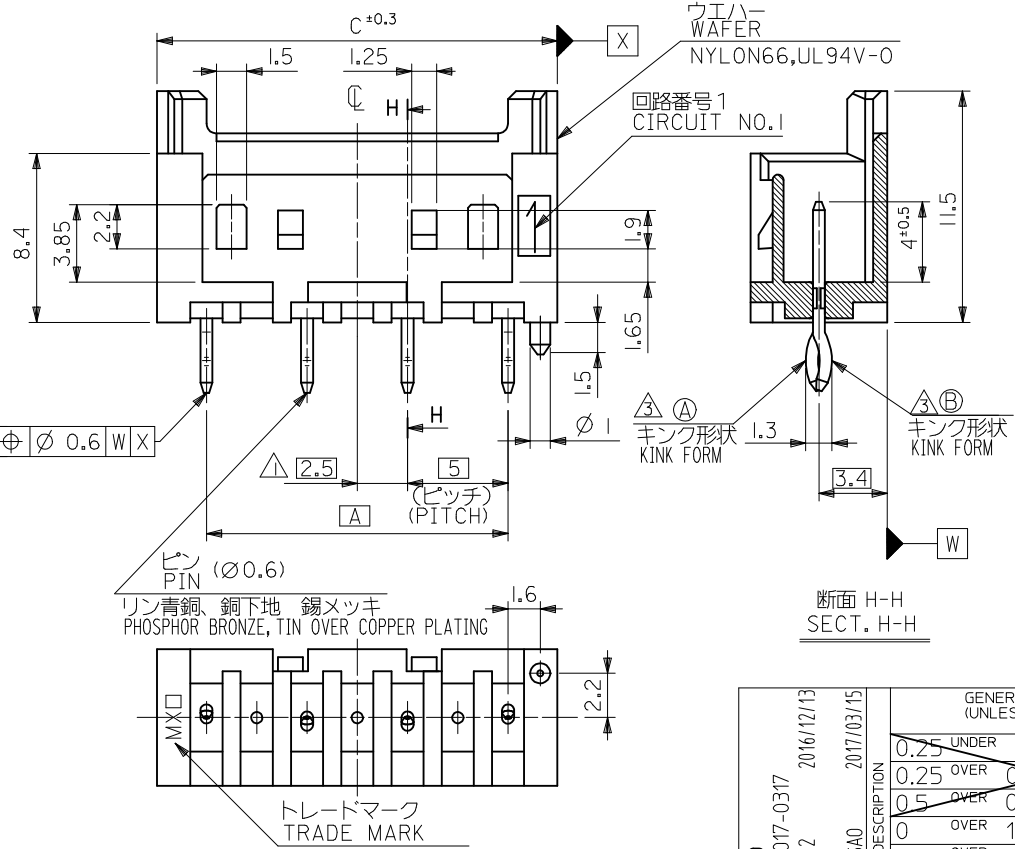


注記
NOTES

△ 偶数極品に適用。
APPLIES ONLY TO EVEN NO. CKT. SIZES.

2. 嵌合相手：51103,51136 シリーズ
MATES WITH : 51103,51136 SERIES.

△ 3極以上のキンク形状は両サイドが(A)、その他の極はすべて(B)形状とする。
KINK FORM
MORE THAN 2 CURCUIT:
PINS AT BOTH ENDS ARE KINK FORMED TO (A),
THE OTHER PINS ARE KINK FORMED TO (B).



34.9	33.2	30	53477-0710	7
29.9	28.2	25	↑ -0610	6
24.9	23.2	20	↓ -0510	5
19.9	18.2	15	↓ -0410	4
9.9	8.2	5	53477-0210	2
C	B	A	MATERIAL NO.	極数 NO. OF CKTS.

REVISED EC NO: J2017-0317 DRWN:MKNO2 2016/12/13 CHKD: APPR:MSASAO 2017/03/15	GENERAL TOLERANCES (UNLESS SPECIFIED)		DIMENSION STYLE MM ONLY		SCALE 4:1	DESIGN UNITS METRIC	THIRD ANGLE PROJECTION
	0.25 UNDER	±0.03	DRAWN BY K.TOJO	DATE '94/11/13	TITLE 5.0 WIRE TO BOARD CONN. WAFER ASSY WITH KINK -LEAD FREE-		
	0.25 OVER	0.5 UNDER	±0.05	CHECKED BY S.KUNISHI	DATE '99/8/24		
	0.5 OVER	0 UNDER	±0.1	APPROVED BY M.FUKUSHIMA	DATE '99/8/24		
	10 OVER	10 UNDER	±0.2	MATERIAL NO.	DOCUMENT NO.	MODEL NO.	53477-**10
30 OVER	±0.25	±0.3	SEE TABLE		SD-53477-001	SHEET NO. 1 OF 1	
ANGULAR ±3 °			DRAFT WHERE APPLICABLE MUST REMAIN WITHIN DIMENSIONS		THIS DRAWING CONTAINS INFORMATION THAT IS PROPRIETARY TO MOLEX ELECTRONIC TECHNOLOGIES, LLC AND SHOULD NOT BE USED WITHOUT WRITTEN PERMISSION		