

**MICRO SWITCH**  
 FREEPORT, ILLINOIS, U.S.A.  
 A DIVISION OF HONEYWELL  
 FED. MFG. CODE 91929

**ASSEMBLY -  
 TOGGLE SWITCH**

CATALOG LISTING  
**13AT272-T2-M**

MILITARY P/N  
 M8805 / 92-014

13AT272-T2-M  
 PAGE 1 OF 1

M

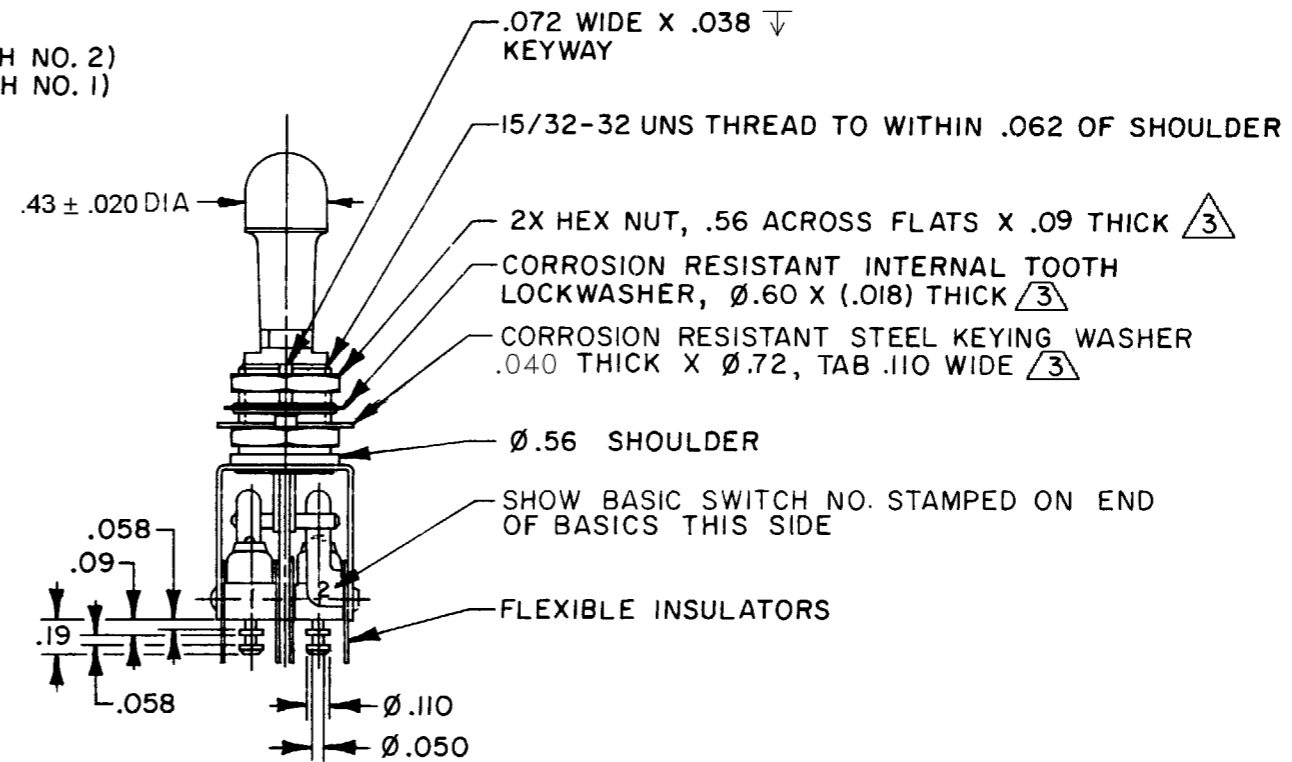
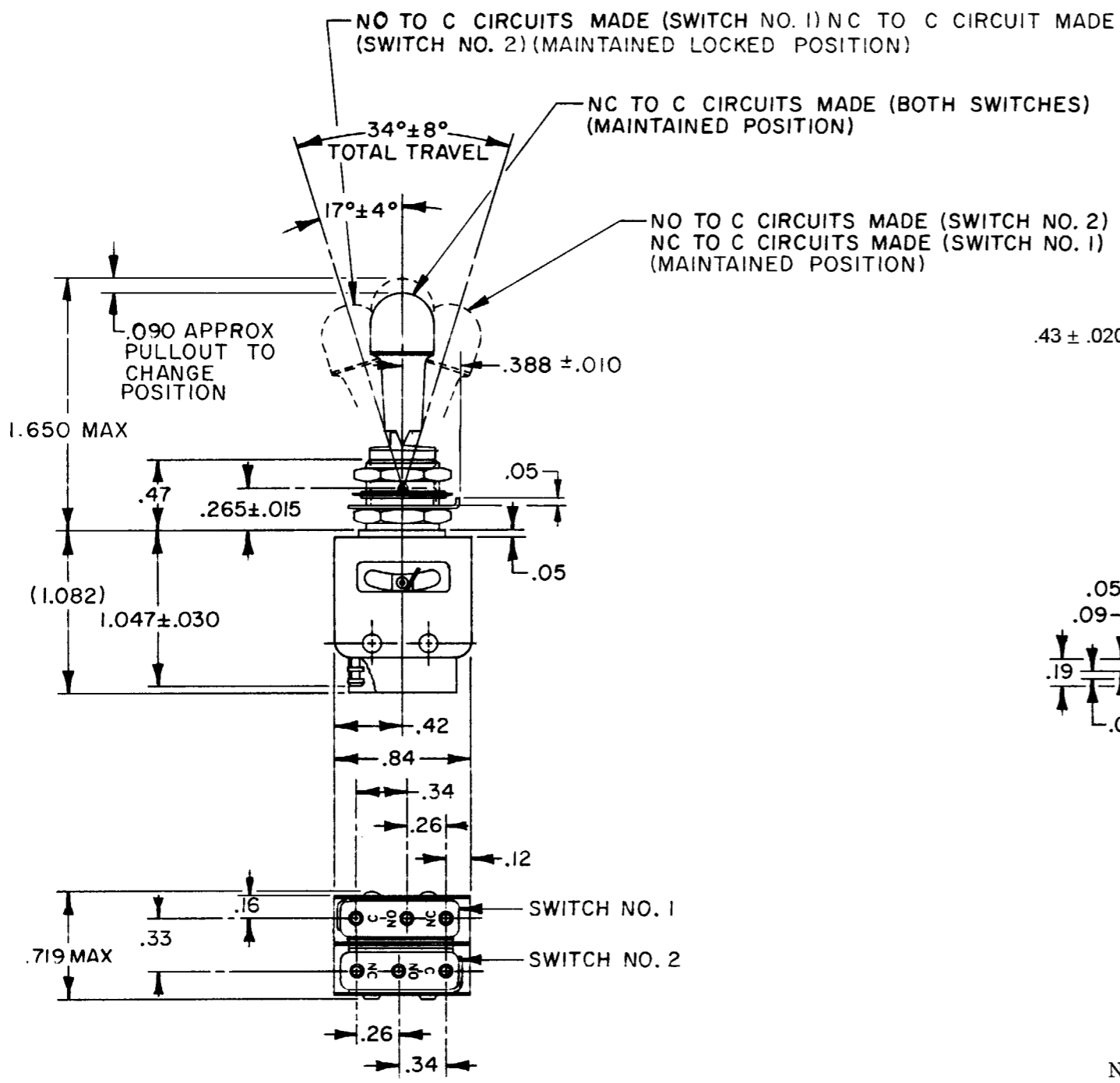
DRAWING  
 NUMBER

ISSUE  
 10

REVISIONS

A	C080402	JALA	11 APR 95
B	C093688	MPO	23 OCT 98
C	C092636	GJW	17 DEC 98
D	205581	DLT	13 MAY 02
E	0008575	KSR	15 OCT 04

REPLACES: PR-1630  
 CHECK: 15 OCT 04  
 AK  
 CHECK: 23 OCT 98  
 JAF  
 CHECK: 29 JUNE 84  
 TSK



- NOTES
- 1 - UNIT INCLUDES CAT. LIST. 21SM284-T2 BASIC SWITCH (MS25085-2) (2)
  - 2 - TERMINALS ARE PLATED FOR SOLDERING
  - (3) HARDWARE FURNISHED ASSEMBLED WITH SWITCH OR IN PACKET PER MIL-PRF-8805
  - 4 - REPLACEMENT MOUNTING HARDWARE PACKET 15PA311-AT

ANSI Y14.5M-1982 APPLIES

THIS DRAWING COVERS A PROPRIETARY ITEM AND IS THE PROPERTY OF MICRO SWITCH, A DIVISION OF HONEYWELL. THIS DRAWING IS NOT TO BE COPIED OR USED WITHOUT THE APPROVAL OF MICRO SWITCH.

SCALE FULL				
DO NOT SCALE PRINT				
TOLERANCES				
APPLY TO DESIGN UNITS. CONVERSIONS ARE ONLY FOR REFERENCE. UNLESS NOTED, TOLERANCES ARE ±				
DIM. IN	TOL. IN			
DIM. MM	TOL. MM			
NO PLACES	X	1/04	X	0.025
ONE PLACE	X,X	0.4/016	X,X	0.0125
TWO PLACES	X,XX	0.157/006	X,XX	0.00625
THREE PLACES	X,XXX		X,XXX	0.00156
ANGLES				
DESIGN UNITS				
SI METRIC	<input type="checkbox"/>			
US CUSTOMARY	<input checked="" type="checkbox"/>			
THIRD ANGLE PROJECTION				
WEIGHT .06 LB				

CHARACTERISTICS	ELECTRICAL DATA		
	CONTACT ARRANGEMENT S P D T (2)		
	SEA LEVEL	50,000 FT	
LOAD	28 VDC	115 VAC	28 VDC
RESISTIVE	5	5	5
INDUCTIVE	3	5	2.5
LAMP	2.4	1.5	2.4

RASTER  
 DRAWN