

MICRO SWITCH

FREEDPORT ILLINOIS, U.S.A.
A DIVISION OF HONEYWELL

FED. MFG. CODE 91929

**SWITCH-TOGGLE
(MAGNETIC HOLD-IN)**

CATALOG LISTING
25ET17-2-F

THIS DRAWING COVERS A PROPRIETARY ITEM AND IS THE PROPERTY OF MICRO SWITCH A DIVISION OF HONEYWELL. THIS DRAWING IS NOT TO BE COPIED OR USED WITHOUT THE APPROVAL OF MICRO SWITCH.

M 25ET17-2-F

DRAWING NUMBER

ISSUE

27

33

34

35

REPLACES

RELEASE NO. PR-4852

CHECK

REVISIONS

A	CO 5472	
K	F K	19 MAR 75
B	CO 5952	
R	R R	8 MAR 76
C	CO 5052	
W	W J	24 SE 81
D	CO 58300	
S	L B	3 NO 82
E	CO 5402	
K	K E	16 APR 84
F	CO 5800	
T	T S	31 AUG 84

CHECK

21 MAR 75

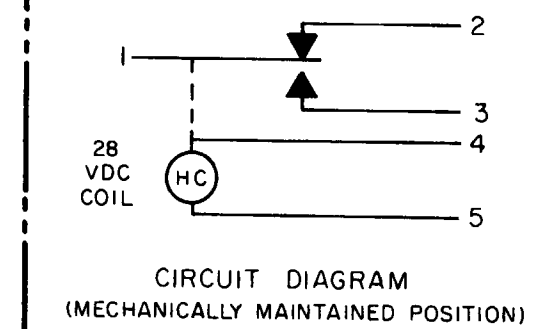
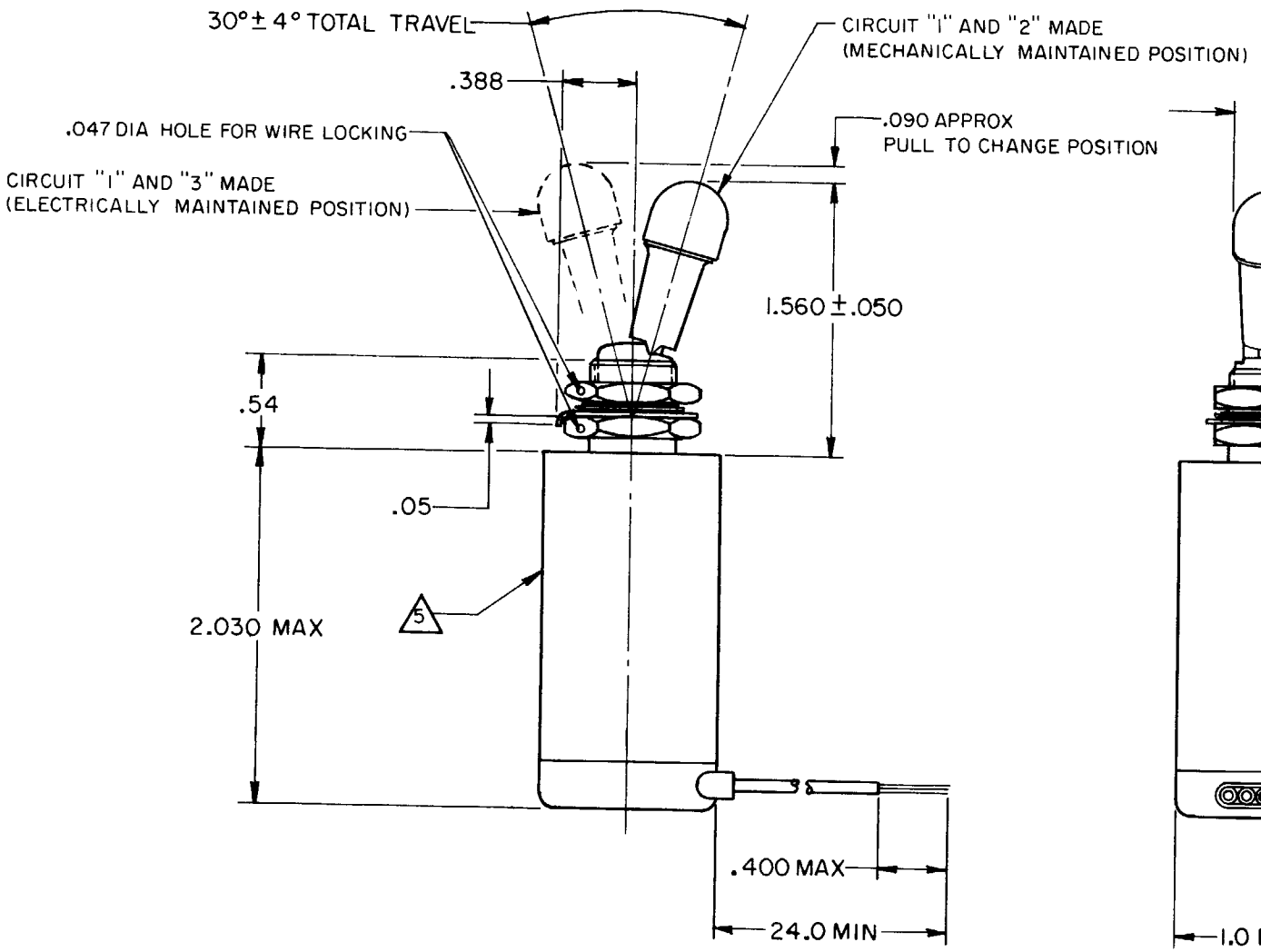
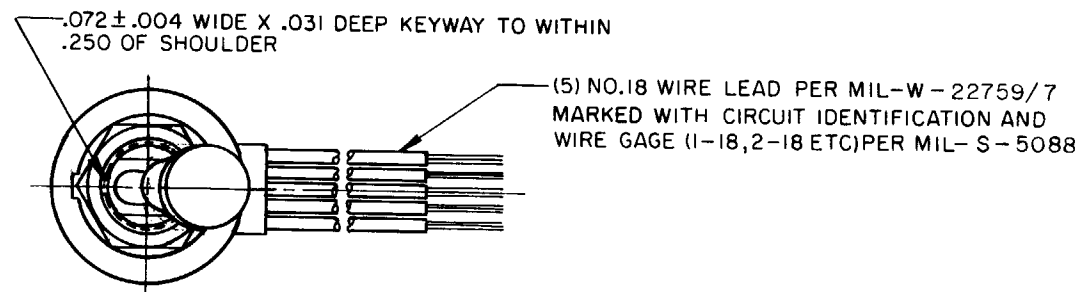
CHECK

75

MAR

DRAWN

FO-2851



NOTES

- 1 - EXPOSED PARTS ARE OF CORROSION RESISTANT MATERIAL OR ARE SUITABLY PROTECTED TO PREVENT CORROSION. ENCLOSURE FINISHED WITH BLUE EPOXY BASED ENAMEL COLOR NO. 25184 PER FEDERAL STANDARD 595
- 2 - SWITCH SEALED PER MIL-S-5594
- 3 - HOLD IN VOLTAGE: THE MINIMUM SPECIFIED VOLTAGE AT WHICH THE LEVER WILL REMAIN ACTUATED: HOLD IN MAY OCCUR AT A LOWER VALUE. DROP OUT VOLTAGE THE VOLTAGE RANGE IN WHICH THE LEVER WILL BE RELEASED
- 4 - CIRCUITS CAN BE TRANSFERRED MANUALLY. ENERGIZING THE COIL WILL NOT CAUSE TRANSFER OF CIRCUITS
- 5 - CIRCUIT IDENTIFICATION IS SHOWN ON SWITCH
- 6 - HARDWARE MAY BE FURNISHED UNASSEMBLED PER MIL-S-5594

CHARACTERISTICS	ELECTRICAL DATA	SCALE FULL
SOLENOID RATING AT 20°C	CONTACT ARRANGEMENT S P D T	DO NOT SCALE PRINT
STEADY STATE LIMITS-----20-29 VDC	RATINGS IN AMPERES	UNLESS OTHERWISE NOTED DIMENSIONS ARE IN INCHES TOLERANCES ARE:
HOLD IN-----10 VDC		
DROP OUT-----0-10 VDC	SEA LEVEL	TWO PLACE (.00) ±.015
COIL RESISTANCE-----220 OHM MIN		THREE PLACE (.000) ±.005
OPERATING FORCE-----7 LBS MAX	RES IND/MOTOR	ANGLES ±
OVERRIDE FORCE AT 29 VDC-----10 LBS MAX	28 VOLTS DC 4 3 4	WEIGHT 8.3 OZ MAX