

GREEN (Vout -) — RED (POSITIVE +)
 BLACK (NEGATIVE -) — WHITE (Vout +)

TERMINATION (5)

GENERAL OPERATING CHARACTERISTICS
 (ELECTRICAL PERFORMANCE AT 10.00±0.01 VDC EXCITATION, 25°C)

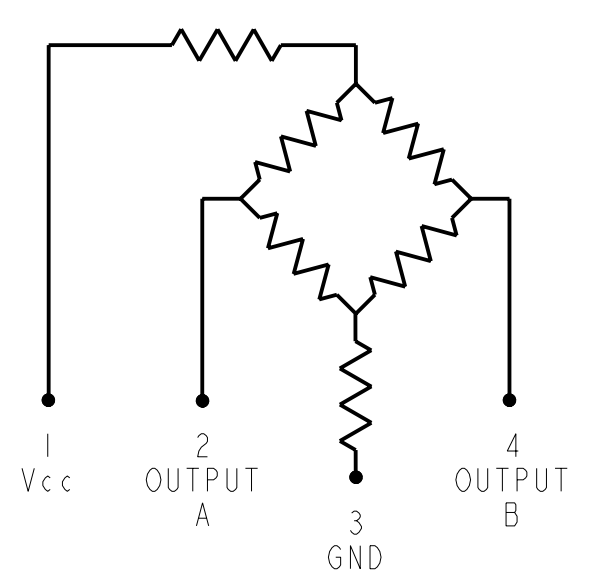
PRESSURE RANGE (PSI)	0-5			UNITS
	MIN	NOM	MAX	
SPAN (P2>P1) $\triangle 1$	47	50	53	mV
NULL OFFSET	-1.5	0	+1.5	mV
LINEARITY (BFSL, P2>P1)	TYP		MAX	UNITS
		.4	.5	%SPAN
NULL SHIFT (0 TO 25°C, 25 TO 50°C) $\triangle 2$		±.5	±1.0	mV
SPAN SHIFT (0 TO 25°C, 25 TO 50°C) P2>P1 $\triangle 2$		±1.0	±1.5	%SPAN
REPEATABILITY AND HYSTERESIS		±.2		%SPAN
OVERPRESSURE (P2>P1; P1>P2)			20	PSI

ALL PRESSURE RANGE	MIN	TYP	MAX	UNITS
EXCITATION VOLTAGE		10	16	VDC
INPUT RESISTANCE	5.5K	7.5K	11.5K	OHMS
OUTPUT RESISTANCE	1.5K	2.5K	3.0K	OHMS
RESPONSE TIME			1.0	ms

TEMPERATURE RANGES	
STORAGE	-55°C TO +100°C (-67°F TO +212°F)
OPERATE	-40°C TO +85°C (-40°F TO +185°F)
COMPENSATED	0 TO +50°C (+32°F TO +122°F)

- NOTES
- $\triangle 1$ - SPAN IS THE ALGEBRAIC DIFFERENCE BETWEEN OUTPUT AT MINIMUM RATED OPERATING PRESSURE AND OUTPUT AT 0 PSI
 - $\triangle 2$ - TEMPERATURE ERROR IS CALCULATED WITH RESPECT TO 25°C
 - 3 - INPUT MEDIA LIMITED ONLY TO THOSE MATERIALS THAT WILL NOT ATTACK SILICON, THE HOUSING MATERIAL OR SEAL MATERIAL
 - 4 - PIN 1 IS IDENTIFIED BY RED WIRE
 - 5 - SENSOR IS OPERATIONAL OVER VACUUM PRESSURE RANGE
 - 6 - RATIO METRIC TO SUPPLY VOLTAGE
 - $\triangle 7$ - CATALOG LISTING AND DATE CODE HERE. CATALOG LISTING BRAND IS 6BF5G38. ALTERNATE FORMAT OF CATALOG LISTING BRAND IS THE ENTIRE CATALOG LISTING

CIRCUIT DIAGRAM



OUTPUT "A"
 INCREASES AS P2
 PRESSURE INCREASES

OUTPUT "B"
 DECREASES AS P2
 PRESSURE INCREASES

THIRD ANGLE PROJECTION

SCALE 2 : 1

DO NOT SCALE PRINT

UNLESS OTHERWISE SPECIFIED TOLERANCES ARE

ONE PLACE	(.0)	±.030
TWO PLACES	(.00)	±.015
THREE PLACES	(.000)	±.005
ANGLES		±

WEIGHT

THIS DRAWING COVERS A PROPRIETARY ITEM AND IS THE PROPERTY OF MICRO SWITCH, A DIVISION OF HONEYWELL. THIS DRAWING IS NOT TO BE COPIED OR USED WITHOUT THE APPROVAL OF MICRO SWITCH.

MICRO SWITCH
 a Honeywell Division

BRIDGE PRESSUER SENSOR

CATALOG LISTING
26PCBFG5G38

ANSI Y14.5M-1982 APPLIES

FED. MFG. CODE 91929

P.T.C./CAD 30
 DRAWN
 KED 50CT00
 CHECK
 SAV 50CT00
 CHECK
 50CT00
 REVISIONS
 A 204006
 TSM
 25SEP01
 ISSUE 2
 DRAWING NUMBER
 26PCBFG5G38
 RELEASE NO. 201431
 PAGE 1 OF 1
 REPLACES