

**MICRO SWITCH**  
 FREEPORT, ILLINOIS, U.S.A.  
 A DIVISION OF HONEYWELL  
 FED. MFG. CODE 91929

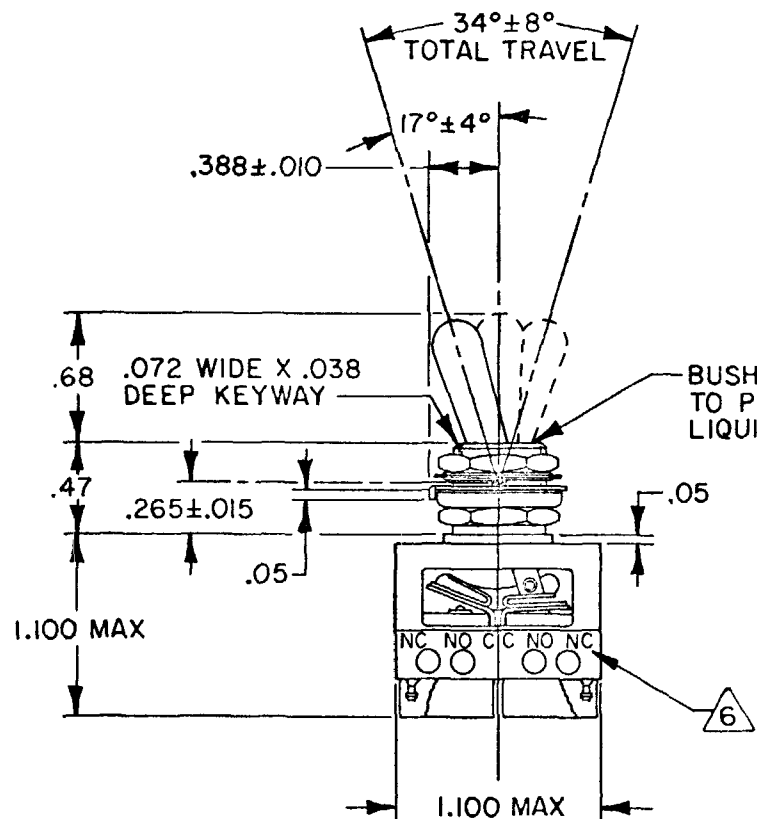
**ASSEMBLY-  
 TOGGLE SWITCH**

CATALOG LISTING  
**64AT300 SERIES**  
**CHART 1**

MILITARY PART NUMBER	CATALOG LISTING	KEYWAY POSITION		CENTER POSITION		OPPOSITE KEYWAY POSITION	
		C-NC	C-NO	C-NO	C-NC	C-NC	C-NO
M8805/ 98-001	64AT300-1	1,2	3,4	NONE	ALL	3,4	1,2
M8805/ 98-015	64AT300-3	1,2	3,4	NONE	NONE	3,4	1,2
M8805/ 98-019	64AT300-5	1,2*	3,4*	NONE	ALL	3,4	1,2
M8805/ 98-026	64AT300-7	1,2*	3,4*	NONE	ALL	3,4*	1,2*

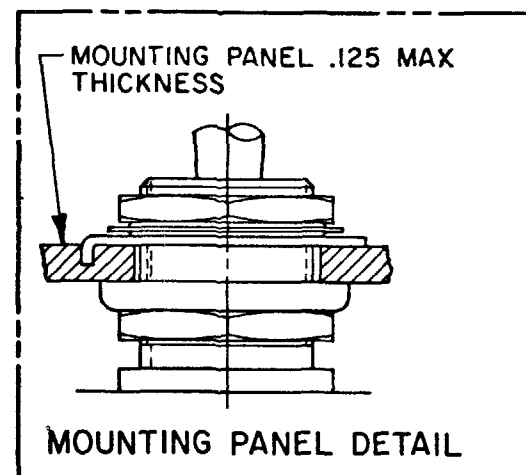
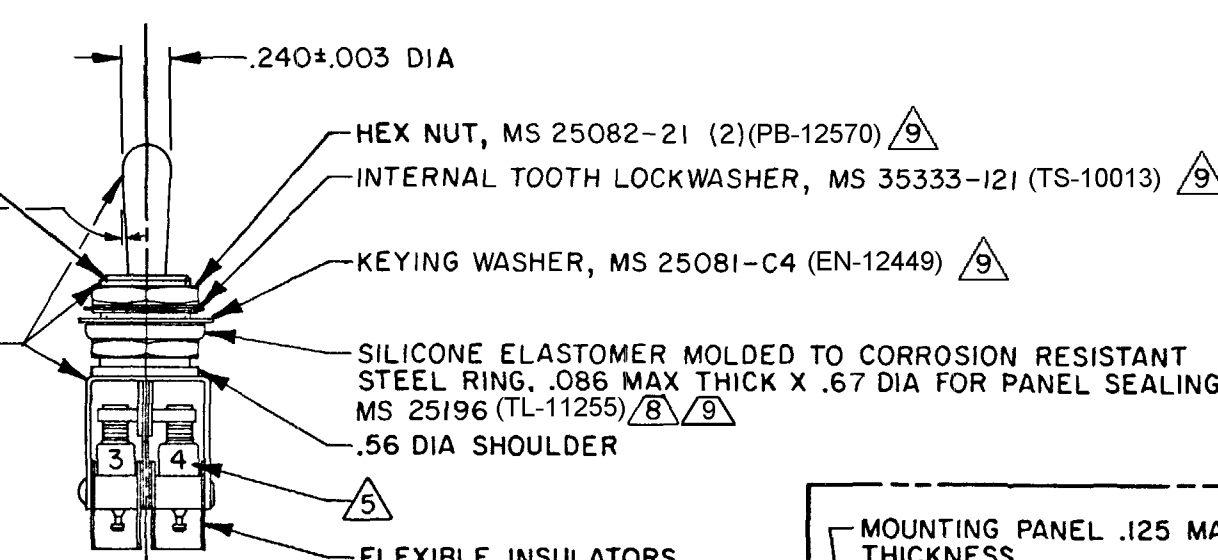
\* ASTERISK DENOTES MOMENTARY POSITION

CATALOG LISTING  
**64AT300 SERIES CHART 1**  
 PAGE 1 OF 1  
 RELEASE NO. PR-9715  
 REPLACES  
 ISSUE **M**  
**9**  
 REVISIONS  
 A CO49835 R J H 30 JUN 81  
 B CO-58771 K A G 14 FEB 86  
 C CO63381 D J S 19 MAY 88  
 D CO72702 L J F 7 JUN 92  
 E CO81168 J A L 12 OCT 95  
 F 203819 S A V 4 SEPT 01  
 G 204159 C S L 15 OCT 01  
 H 204763 G J W JAN 02  
 CHECK C E R 7 JAN 81  
 DRAWN G L H

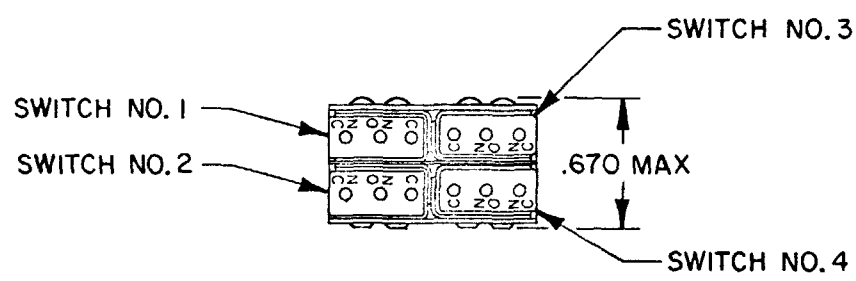


15/32-32 UNS THREAD TO WITHIN .062 OF SHOULDER

CORROSION RESISTANT LEVER BUSHING AND BRACKET



- NOTES
- UNIT INCLUDES "SX" TYPE BASIC SWITCH (4) (MEETS REQUIREMENTS OF MIL-PRF-8805/4)
  - SWITCHES DO NOT NECESSARILY OPERATE SIMULTANEOUSLY
  - TERMINALS ARE PLATED FOR SOLDERING
  - 4 DULL FINISH ON LEVER AND BUSHING
  - 5 SWITCH NUMBERS MARKED ON END OF BASIC SWITCHES
  - 6 TERMINAL DESIGNATION STAMPED ON BOTH SIDES OF UNIT
  - 7 WHEN LEVER IS MOVED OUT OF A MAINTAINED POSITION, IT WILL RETURN OF ITS OWN ACCORD TO THE ORIGINAL POSITION OF THE ADJACENT POSITION. THE TOGGLE LEVER MAY HANG UP BETWEEN THE TWO ADJACENT POSITIONS ONLY BE EXERTING CONSIDERABLE EFFORT
  - 8 FOR PANEL SEAL TO BE EFFECTIVE MOUNTING HOLE IN PANEL SHOULD NOT EXCEED .500 DIAMETER
  - 9 HARDWARE FURNISHED ASSEMBLED WITH SWITCH OR IN PACKET 15PA314-AT PER MIL-PRF-8805
  - 10 - REPLACEMENT MOUNTING HARDWARE PACKET 15PA314-AT



THIS DRAWING COVERS A PROPRIETARY ITEM AND IS THE PROPERTY OF MICRO SWITCH, A DIVISION OF HONEYWELL. THIS DRAWING IS NOT TO BE COPIED OR USED WITHOUT THE APPROVAL OF MICRO SWITCH.

CHARACTERISTICS	ELECTRICAL DATA
OPERATING FORCE FORCE TO MOVE LEVER FROM ONE POSITION TO ANY ADJACENT POSITION 1 - 5 LB APPLIED .125±.030 BELOW TOP OF LEVER	CONTACT ARRANGEMENT S P D T (4)

SCALE FULL

DO NOT SCALE PRINT

TOLERANCES  
 APPLY TO DESIGN UNITS. CONVERSIONS ARE ONLY FOR REFERENCE. UNLESS NOTED, TOLERANCES ARE 2

DIM.	TOL.	DIM.	TOL.
mm	mm/in	in	mm/in
NO PLACES	X	12.04	X X
ONE PLACE	X.X	0.41016	X.XX
TWO PLACES	X.XX	0.157008	X.XXX
THREE PLACES	X.XXX		X.XXXX

DESIGN UNITS  METRIC  US CUSTOMARY

THIRD ANGLE PROJECTION

WEIGHT .07 LB EST

LOAD	ELECTRICAL RATINGS		
	SEA LEVEL		50,000 FT
	28 Vdc (AMPERES)	115 Vac, 60 Hz (AMPERES)	28 Vdc (AMPERES)
RESISTIVE	7	7	4
INDUCTIVE	4	7	2.5