

MICROSWITCH
a Honeywell Division

FED. MFG. CODE 91929

ASSEMBLY - TOGGLE SWITCH

CATALOG LISTING
64AT315 SERIES CHART 1

CATALOG LISTING	KEYWAY POSITION		CENTER POSITION		OPPOSITE KEYWAY POSITION	
	C-NC	C-NO	C-NO	C-NC	C-NC	C-NO
64AT315-1	1,2	3,4	NONE	ALL	3,4	1,2
64AT315-3	1,2	3,4	NONE	NONE	3,4	1,2
64AT315-5	1,2	3,4	NONE	ALL	3,4	1,2
64AT315-7	1,2	3,4	NONE	ALL	3,4	1,2

* ASTERISK DENOTES MOMENTARY POSITION

CATALOG LISTING
64AT315 SERIES CHART 1

PAGE 1 OF 1

REPLACES -

RELEASE NO. PR-22128

CHECK

ISSUE 3

REVISIONS

A 206040
D L T
15 JUL 02

B 206093
C S L
5 AUG 02

CHECK

SAV 15 JUL 02

CHECK

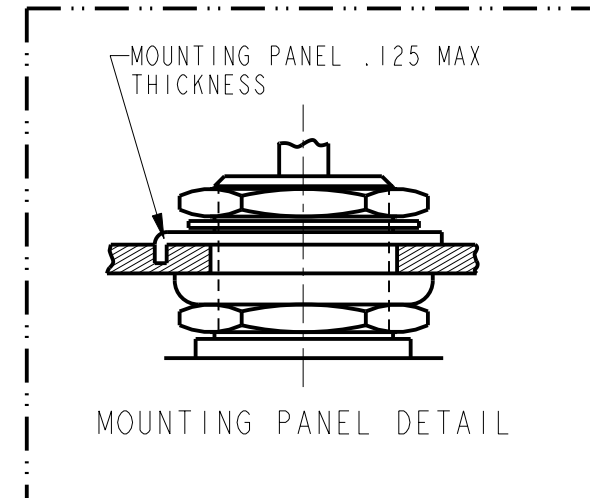
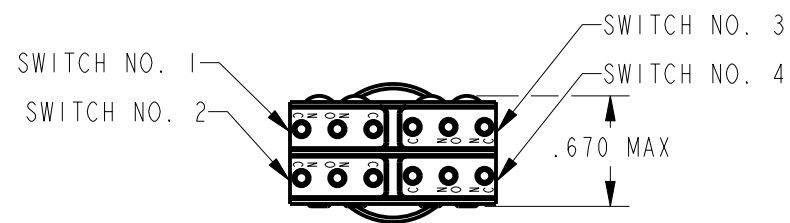
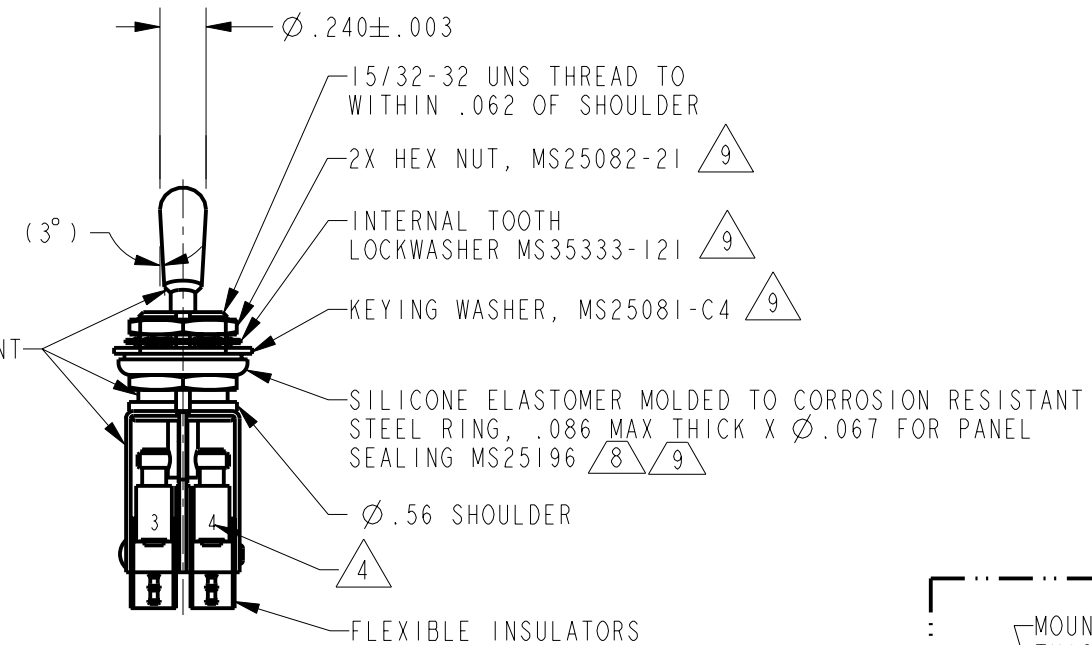
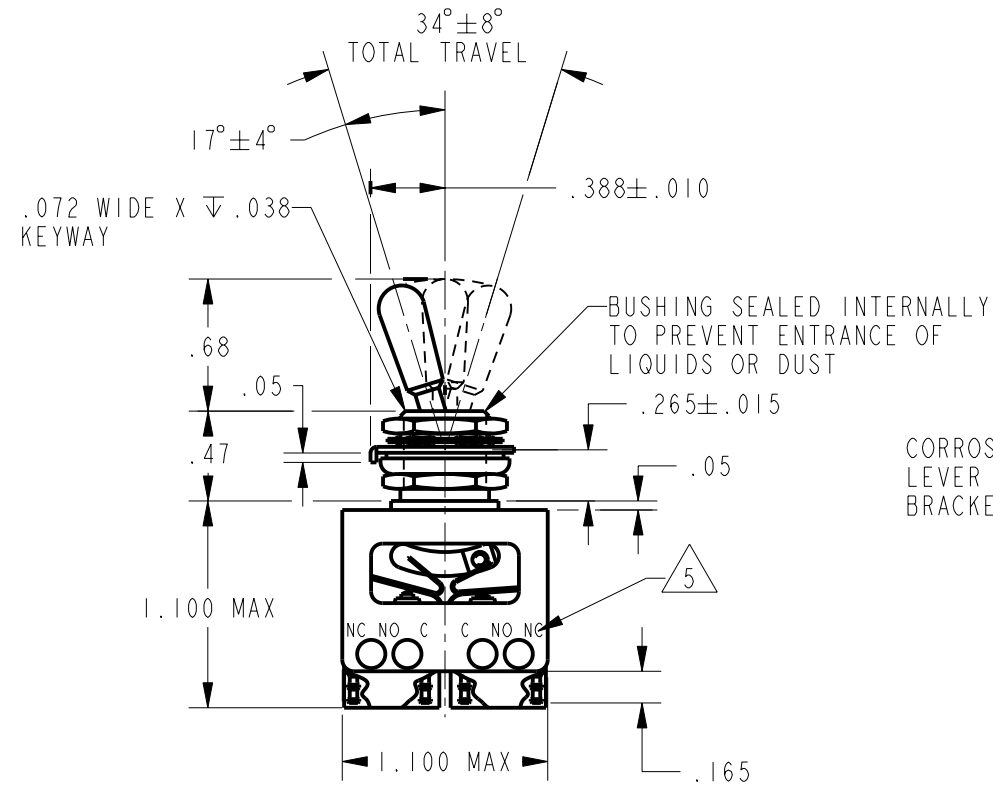
SAV 15 JUL 02

CHECK

SAV 15 JUL 02

PTC/CAD 2D

DRAWN



- NOTES
- UNIT INCLUDES 4X "SX" TYPE BASIC SWITCH
 - SWITCHES DO NOT NECESSARILY OPERATE SIMULTANEOUSLY
 - TERMINALS ARE PLATED FOR SOLDERING
 - SWITCH NUMBERS MARKED ON END OF BASIC SWITCHES
 - TERMINAL DESIGNATION STAMPED ON BOTH SIDES OF UNIT
 - DULL FINISH ON LEVER AND BUSHING
 - WHEN LEVER IS MOVED OUT OF A MAINTAINED POSITION, IT WILL RETURN OF ITS OWN ACCORD TO THE ORIGINAL POSITION OR THE ADJACENT POSITION. THE TOGGLE LEVER MAY HANG UP BETWEEN THE TWO ADJACENT POSITIONS ONLY BY EXERTING CONSIDERABLE EFFORT
 - FOR PANEL SEAL TO BE EFFECTIVE, MOUNTING HOLE IN PANEL SHOULD NOT EXCEED ∅.500
 - HARDWARE FURNISHED ASSEMBLED WITH SWITCH OR IN PACKET PER MIL-PRF-8805
 - REPLACEMENT MOUNTING HARDWARE PACKET 15PA314-AT

THIS DRAWING COVERS A PROPRIETARY ITEM AND IS THE PROPERTY OF MICRO SWITCH, A DIVISION OF HONEYWELL. THIS DRAWING IS NOT TO BE COPIED OR USED WITHOUT THE APPROVAL OF MICRO SWITCH

CHARACTERISTICS	ELECTRICAL DATA
	CONTACT ARRANGEMENT 4X S P D T
	L22 1A 125 VAC

THIRD ANGLE PROJECTION	
SCALE	FULL
DO NOT SCALE PRINT	
UNLESS OTHERWISE SPECIFIED TOLERANCES ARE	
ONE PLACE	(.0) ±.030
TWO PLACE	(.00) ±.015
THREE PLACE	(.000) ±.005
ANGLES	±
WEIGHT	.07 LB EST



ANSI Y14.5M-1982 APPLIES