



# MICRO SWITCH

FREEPORT, ILLINOIS, U.S.A.  
A DIVISION OF HONEYWELL

FED. MFG. CODE 91929

# SWITCH-BASIC

CATALOG LISTING  
**BZ-2RL99**

DRAWING NUMBER  
**BZ-2RL99**

PAGE 1 OF 1

REPLACES

RELEASE NO. SR 11423

**M**

ISSUE  
**8**

### REVISIONS

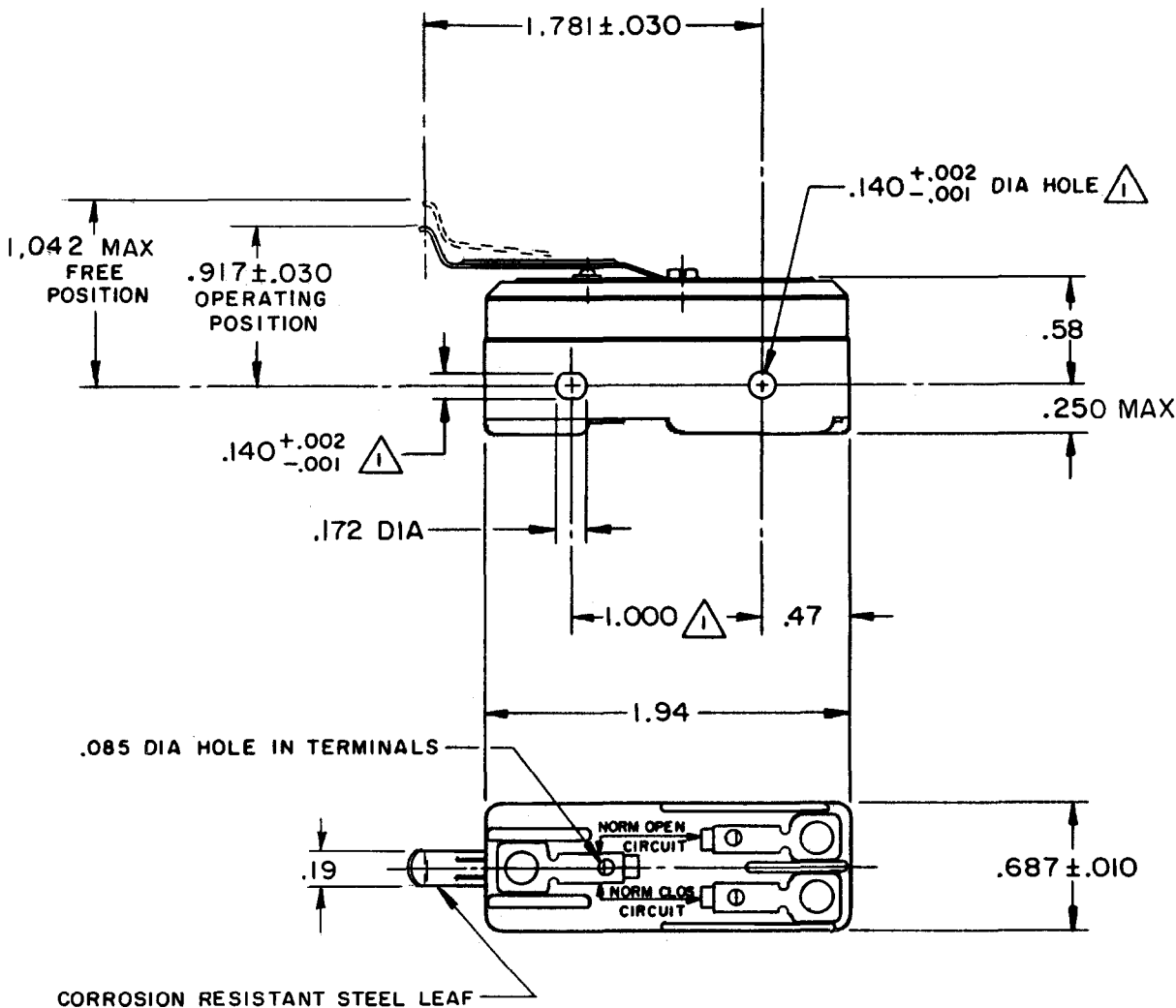
A	CO 19041	16, JAN 64
M B F 26 MAR 64		
B	CO 46304	16, JAN 64
R J H 21 NOV 79		
C	CO 58037	16, JAN 64
SMA 1 OCT 85		
D	CO 72874	16, JAN 64
DLT 18 NOV 94		
E	CO 93346	16, JAN 64
DLT 9 SEP 98		
F	CO 94212-J	16, JAN 64
J J A 5 OCT 99		

FORMTEK

FO-80378

DRAWN

M B F 16 JAN 64



NOTE  
 MOUNTING HOLES WILL ACCEPT PINS OR SCREWS  
 OF .139 MAX DIA ON 1.000 ± .002 CENTERS

THIS DRAWING COVERS A PROPRIETARY ITEM AND IS THE PROPERTY OF MICRO SWITCH, A DIVISION OF MINNEAPOLIS-HONEYWELL REGULATOR CO. THIS DRAWING IS NOT TO BE COPIED OR USED WITHOUT THE APPROVAL OF MICRO SWITCH.

### CHARACTERISTICS

### ELECTRICAL DATA

SCALE FULL

CONTACT ARRANGEMENT  
S P D T

DO NOT SCALE PRINT

UNDERWRITERS' LAB. INC. LISTED RATING.

-L96- 15 A-125, 250, OR 480 VAC  
 1/2 A-125 VDC; 1/4 A-250 VDC  
 1/8 HP-125 VAC, 1/4 HP-250 VAC

UNLESS OTHERWISE NOTED

DIMENSIONS ARE IN INCHES  
**TOLERANCES ARE:**

ONE PLACE (.0) ±.030  
 TWO PLACE (.00) ±.015  
 THREE PLACE (.000) ±.005  
 ANGLES ±

-L288-  
 -L299-  
 -L306-



16A 250V ~ T85 5E4

WEIGHT .050 LB