

# MICRO SWITCH

FREEPORT ILLINOIS, U.S.A  
A DIVISION OF HONEYWELL

FED. MFG. CODE 91929

# SWITCH - BASIC

CATALOG LISTING

## BZ-2RW80198T

M BZ-2RW80198T

PAGE 1 OF 1

REPLACES

RELEASE NO. PR-1139-T

DRAWING NUMBER

4

ISSUE

CHECK

REVISIONS

A	CO-69351-D	JWB	15 JUL 91
B	CO-77589	MAM	29 MAR 94
C	CO93346	DLT	16 SEP 98

17 FEB 70

CMT

CHECK

17 FEB 70

CHECK

LSD

17 FEB 70

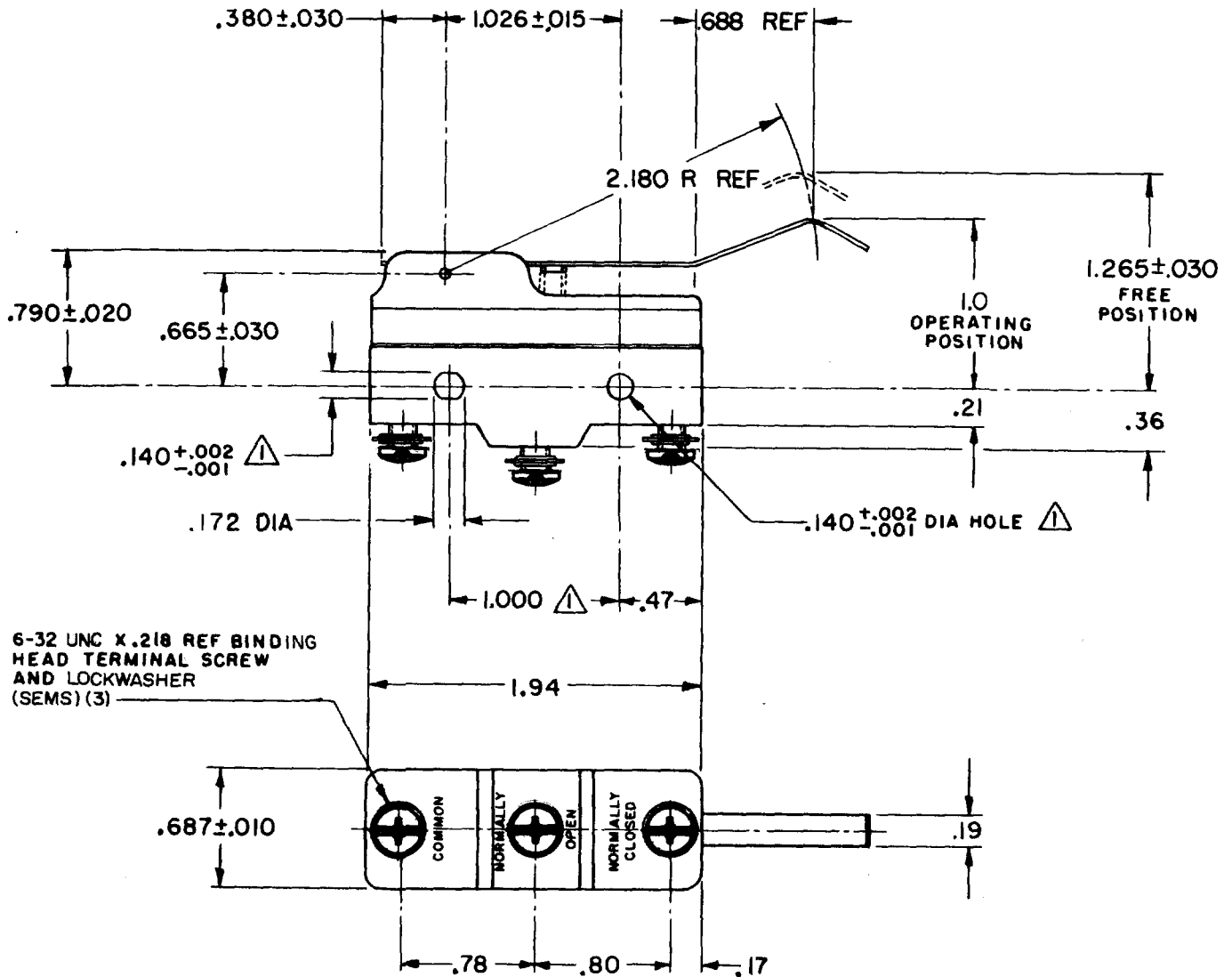
CHECK

17 FEB 70

DRAWN

SRH

13 FEB 70



**NOTE**  
 MOUNTING HOLES WILL ACCEPT PINS OR SCREWS OF .139 MAX DIA ON 1.000±.002 CENTERS

THIS DRAWING COVERS A PROPRIETARY ITEM AND IS THE PROPERTY OF MICRO SWITCH, A DIVISION OF HONEYWELL. THIS DRAWING IS NOT TO BE COPIED OR USED WITHOUT THE APPROVAL OF MICRO SWITCH.

### CHARACTERISTICS

OPERATING FORCE-----3 OZ MAX  
 RELEASE FORCE----- 3/4 OZ MIN  
 DIFFERENTIAL TRAVEL-----.005-.044  
 OVERTRAVEL-----.187 MIN

### ELECTRICAL DATA

CONTACT ARRANGEMENT  
 S P D T

UNDERWRITERS' LAB. INC. LISTED RATING

-L96- 15A-125, 250, OR 480 VAC  
 1/2A-125 VDC, 1/4A-250 VDC  
 1/8 HP-125 VAC, 1/4 HP-250 VAC

-L288-   
 -L299-  
 -L306- 16A 250V T85 5E4

### SCALE FULL

DO NOT SCALE PRINT

UNLESS OTHERWISE NOTED  
 DIMENSIONS ARE IN INCHES

**TOLERANCES ARE:**

ONE PLACE	(.0)	±.030
TWO PLACE	(.00)	±.015
THREE PLACE	(.000)	±.005
ANGLES		±

WEIGHT .073 LB

FORMTEK

FO-50378-1A