

MICRO SWITCH

FREEMONT ILLINOIS, U.S.A
A DIVISION OF HONEYWELL
FED. MFG. CODE 91929

SWITCH - BASIC

CATALOG LISTING

BZ-3RW8055-A2-S

AQG0350

M BZ-3RW8055-A2-S

PAGE 1 OF 1

REPLACES X69869-BZ

RELEASE NO. PR-8112

DRAWING NUMBER

6

ISSUE

REVISIONS

A	CO	47148	
B	SI	DEC 79	
B	CO	67209	
C	JAP	2 MAY 90	
C	CO	73287-J	
D	JAL	22 NOV 93	
D	CO	93346	
E	DLT	18 SEP 98	
E	CO	0017582	
	TSG	06 JAN 06	

CHECK

06 JAN 06

RJ

CHECK

10 SEPT 79

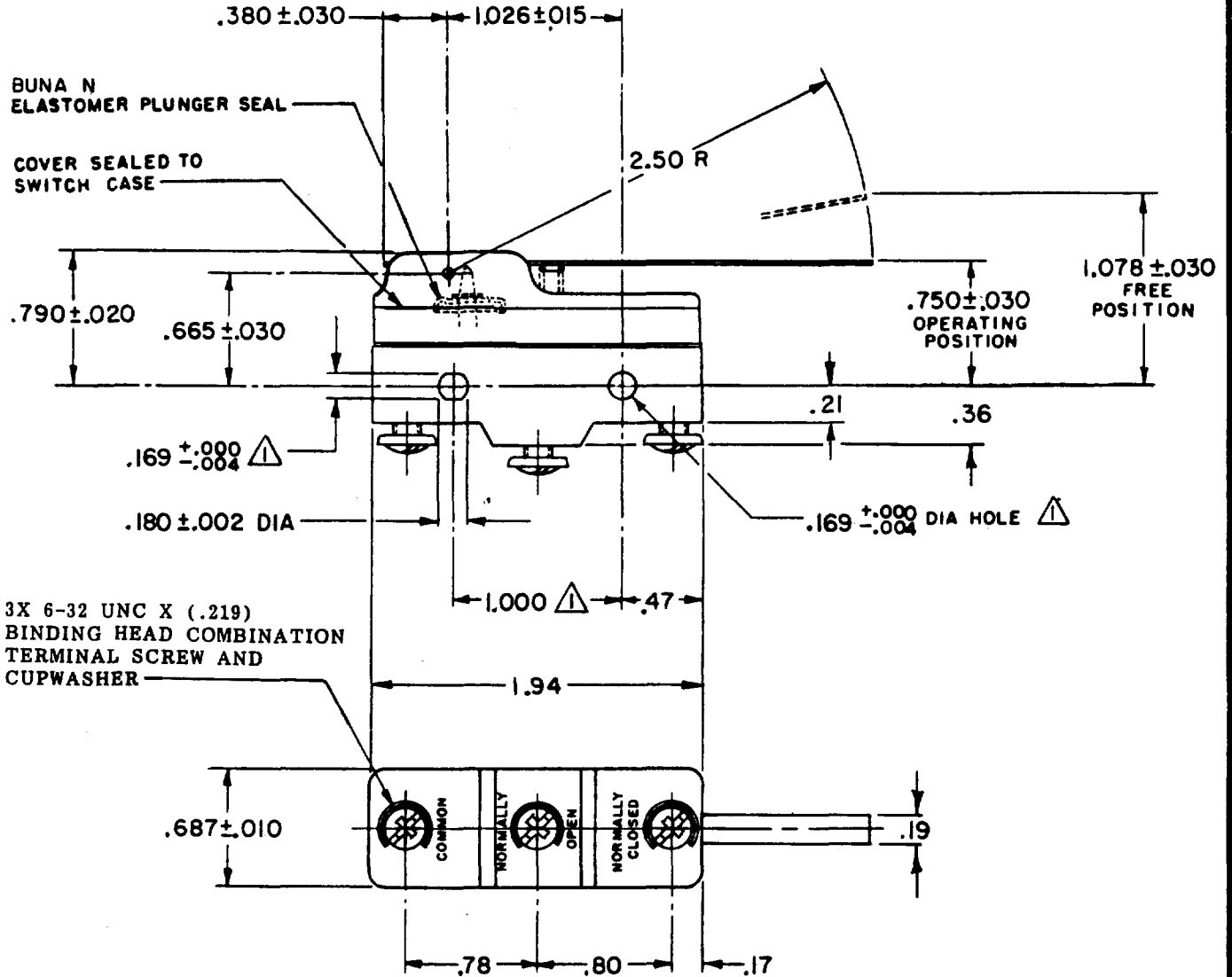
CHECK

WJM 7 SEP 79

FORMTEK

FO-52848-A

DRAWN



NOTES

- ▲ MOUNTING HOLES WILL ACCEPT PINS OR SCREWS OF .165 MAX DIA ON 1.000 ± .002 CENTERS
- 2 - SEALED CONSTRUCTION PROVIDES SPLASH RESISTANCE

THIS DRAWING COVERS A PROPRIETARY ITEM AND IS THE PROPERTY OF MICRO SWITCH, A DIVISION OF HONEYWELL. THIS DRAWING IS NOT TO BE COPIED OR USED WITHOUT THE APPROVAL OF MICRO SWITCH.

THIRD ANGLE PROJECTION

CHARACTERISTICS

OPERATING FORCE ----- 3 OZ MAX
RELEASE FORCE ----- 1/2 OZ MIN
DIFFERENTIAL TRAVEL ----- .015 - .075
OVERTRAVEL ----- .219 MIN

ELECTRICAL DATA

CONTACT ARRANGEMENT
SPDT
L96
15A 125, 250 OR 480 VAC
1/8 HP 125 VAC, 1/4 HP 250 VAC
1/2A 125 VDC, 1/4A 250 VDC

-L288-
-L315-
-L306-



16A 250V ~ T85 5E4

SCALE FULL

DO NOT SCALE PRINT

TOLERANCES
APPLY TO DESIGN UNITS. CONVERSIONS ARE ONLY FOR REFERENCE. UNLESS NOTED, TOLERANCES ARE ±

	DIM.	TOL.	DIM.	TOL.
	mm	mm/in	in	mm/in
NO PLACES	X	1/64	X	0.0703
ONE PLACE	X, X	0.01, 0.10	X, X	0.254, 0.127
TWO PLACES	X, XX	0.13, 0.008	X, XX	0.381, 0.127
THREE PLACES	X, XXX	X, XXX	X, XXX	0.127, 0.008

DESIGN UNITS SI METRIC US CUSTOMARY

WEIGHT .076 LB