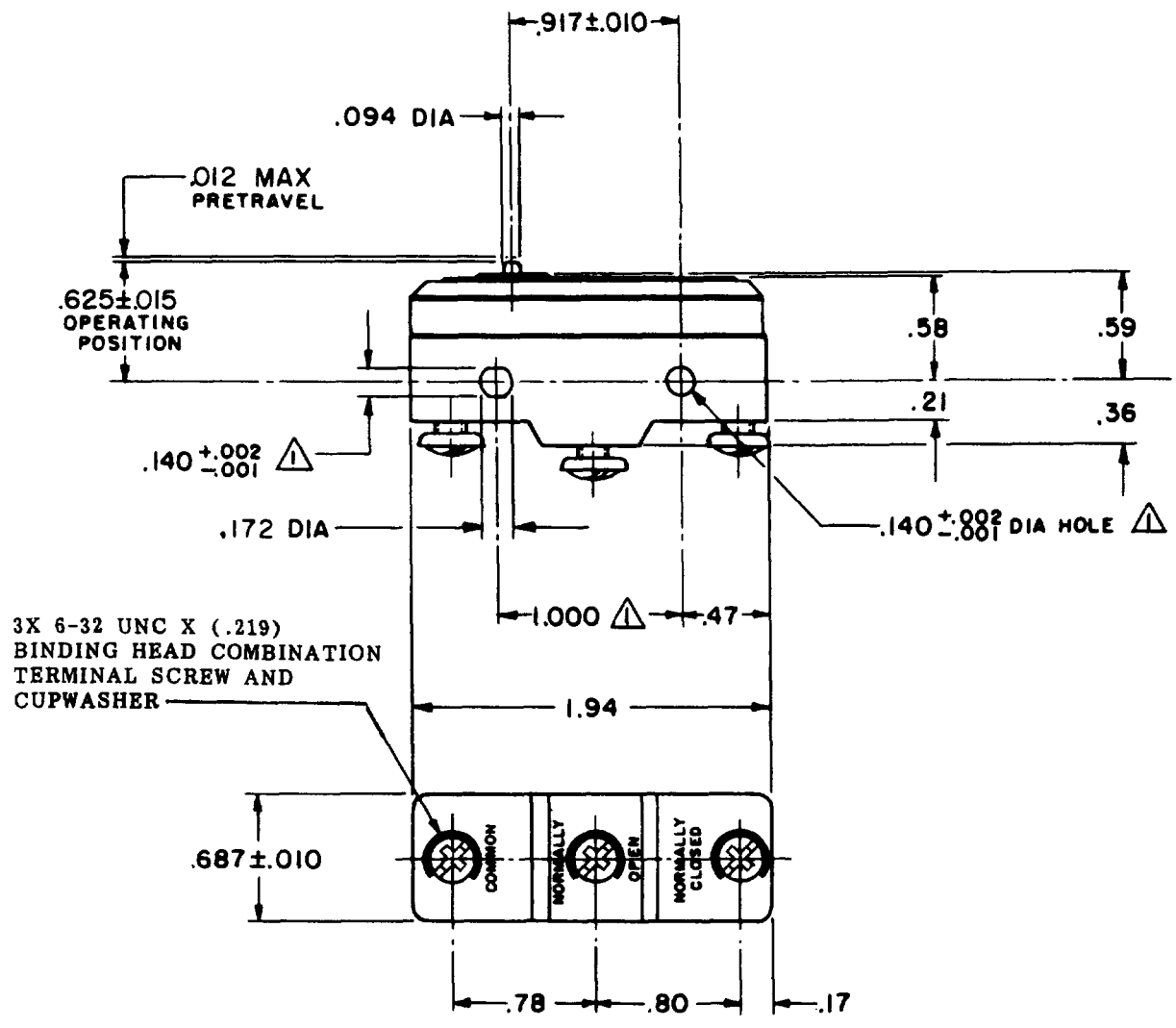


CATALOG LISTING  
**BZ-R88-A2**  
 PAGE 1 OF 1  
 REPLACES  
 RELEASE NO.  
 CHECK  
 REVISIONS  
 A CO15200  
 RLD  
 7 FEB 66  
 B CO-73287-J  
 JAL  
 22 NOV 93  
 C CO-77589  
 JAL  
 30 MAR 94  
 D 203222  
 CSL  
 5 JUN 01  
 CHECK  
 W F E B G G  
 L S D  
 CHECK  
 R L D 7 FEB 66  
 DRAWN  
 R L D 7 FEB 66  
 RASTER  
 FC-90378



3X 6-32 UNC X (.219)  
 BINDING HEAD COMBINATION  
 TERMINAL SCREW AND  
 CUPWASHER

NOTE -  
 ▲ - MOUNTING HOLES WILL ACCEPT PINS OR SCREWS  
 OF .139 MAX DIA ON 1.000 ± .002 CENTERS

THIS DRAWING COVERS A PROPRIETARY ITEM AND IS THE PROPERTY OF MICRO SWITCH, A DIVISION OF HONEYWELL. THIS DRAWING IS NOT TO BE COPIED OR USED WITHOUT THE APPROVAL OF MICRO SWITCH.

CHARACTERISTICS	ELECTRICAL DATA	SCALE FULL
OPERATING FORCE ----- 9 OZ MAX	CONTACT ARRANGEMENT S P D T	DO NOT SCALE PRINT
RELEASE FORCE ----- 3 OZ MIN	L8 10A 125, 250 OR 480 VAC	UNLESS OTHERWISE NOTED DIMENSIONS ARE IN INCHES
DIFFERENTIAL TRAVEL ----- .0007 MAX	L288	<b>TOLERANCES ARE:</b>
OVERTRAVEL ----- .005 MIN	CE RL	ONE PLACE (.0) ±.030 TWO PLACE (.00) ±.015 THREE PLACE (.000) ±.005 ANGLES ±
		WEIGHT .060 LB



# MICRO SWITCH

FREERPORT, ILLINOIS, U.S.A.  
A DIVISION OF HONEYWELL

FED. MFG. CODE 91829

# SWITCH-BASIC

CATALOG LISTING

## BZ-R88-A2

### BZ-R88-A2

### M

DRAWING NUMBER

ISSUE

8\*

5

REPLACES

RELEASE NO.

CHECK

CHECK

14 FEB 66

LSD

CHECK

7 FEB 66

DRAWN

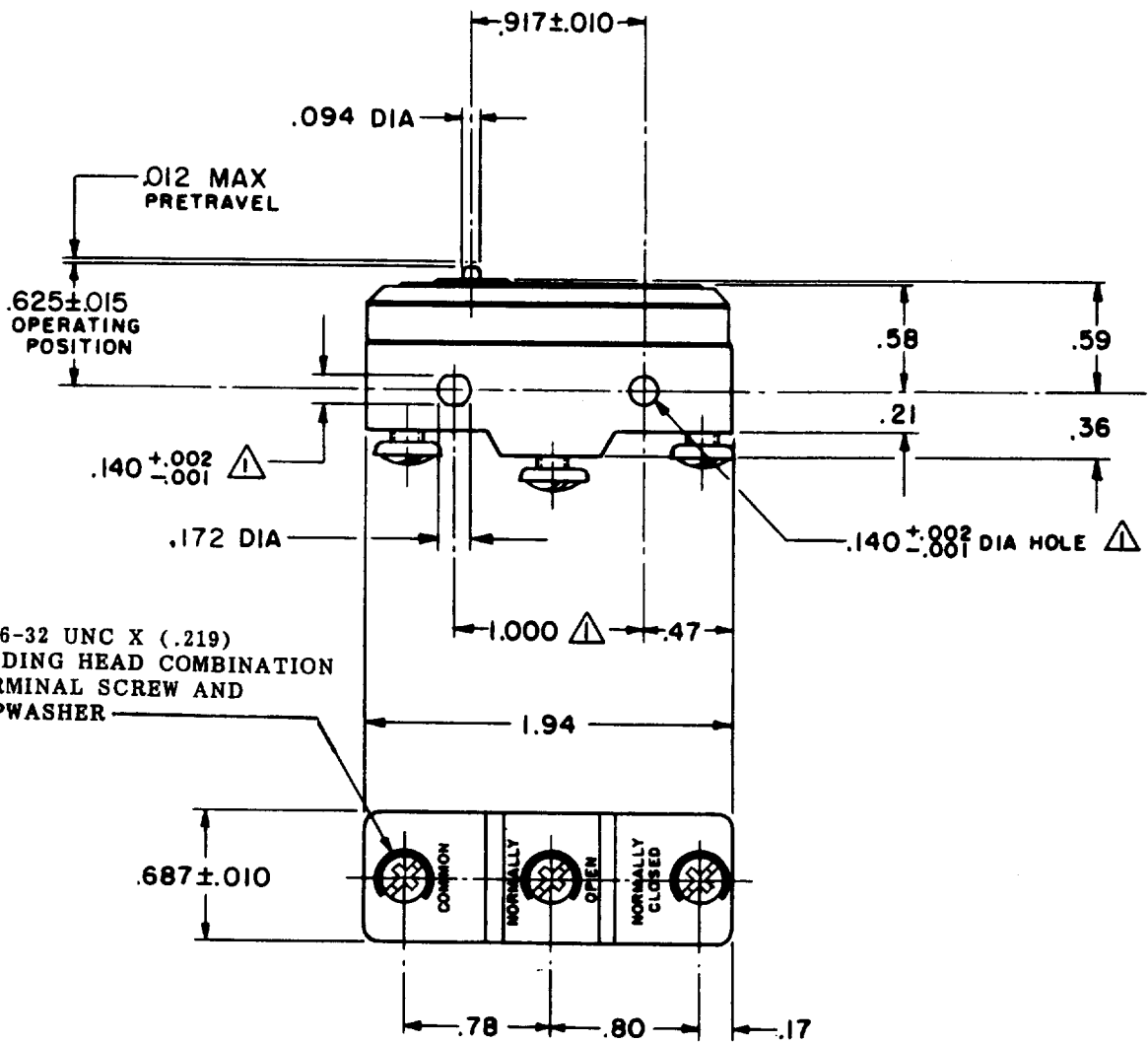
RD

7 FEB 66

#### REVISIONS

A	CO15200	RLD	7 FEB 66
B	CO-73287-J	JAL	22 NOV 93
C	CO-77589	JAL	30 MAR 94

FC-50378



3X 6-32 UNC X (.219)  
BINDING HEAD COMBINATION  
TERMINAL SCREW AND  
CUPWASHER

#### NOTE -

▲ - MOUNTING HOLES WILL ACCEPT PINS OR SCREWS  
OF .139 MAX DIA ON 1.000 ± .002 CENTERS

THIS DRAWING COVERS A PROPRIETARY ITEM AND IS THE PROPERTY OF MICRO SWITCH, A DIVISION OF HONEYWELL. THIS DRAWING IS NOT TO BE COPIED OR USED WITHOUT THE APPROVAL OF MICRO SWITCH.

#### CHARACTERISTICS

OPERATING FORCE ----- 9 OZ MAX  
 RELEASE FORCE ----- 3 OZ MIN  
 DIFFERENTIAL TRAVEL ----- .0007 MAX  
 OVERTRAVEL ----- .005 MIN

#### ELECTRICAL DATA

CONTACT ARRANGEMENT  
S P D T

UNDERWRITERS' LAB. INC. LISTED RATING  
-LB- 10 A-125, 250 OR 480 VAC



SCALE FULL

DO NOT SCALE PRINT

UNLESS OTHERWISE NOTED

DIMENSIONS ARE IN INCHES

#### TOLERANCES ARE:

ONE PLACE	(.0)	±.030
TWO PLACE	(.00)	±.015
THREE PLACE	(.000)	±.005
ANGLES		±

WEIGHT .060 LB