

MICRO SWITCH

FREERPORT ILLINOIS, U.S.A.
A DIVISION OF HONEYWELL

FED. MFG. CODE 91929

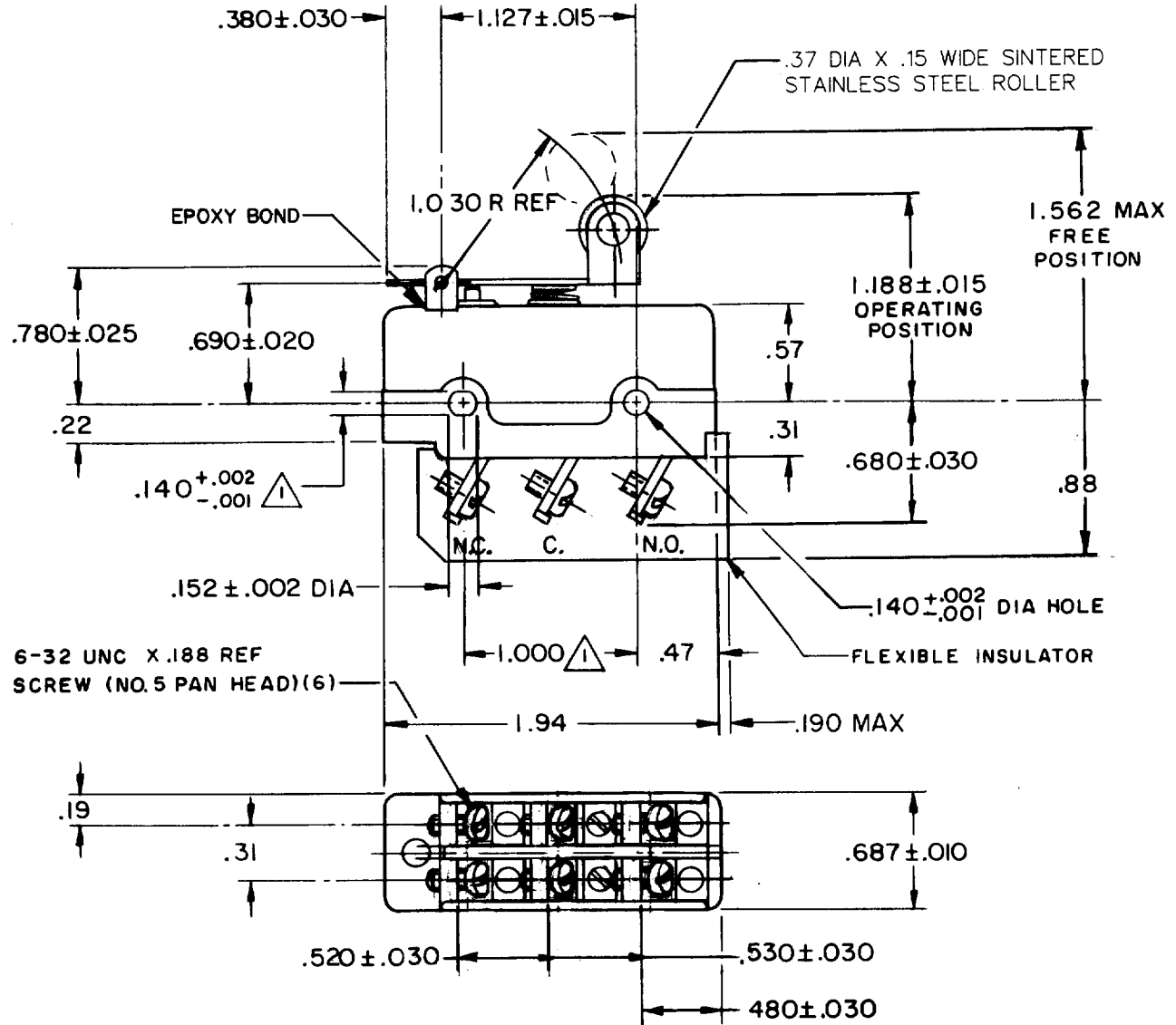
SWITCH-BASIC

CATALOG LISTING

DT-2RV22-B6

5

DT-2RV22-B6
 M
 DRAWING NUMBER
 6
 ISSUE
 3
 REVISIONS
 A CO-30435 SRH 18 APR 72
 B CO-30659 SRH 31 MAY 72
 C CO37528 C J H 31 AUG 76
 D CO58280 SI MAR 77
 E CO-75204-B S A V 1 FEB 94
 M B S 3 APR 70
 DRAWN
 FO-50378-1A



NOTE-
 MOUNTING HOLES WILL ACCEPT PINS OR SCREWS OF .139 MAX DIA ON $1.000 \pm .002$ CENTERS

THIS DRAWING COVERS A PROPRIETARY ITEM AND IS THE PROPERTY OF MICRO SWITCH, A DIVISION OF HONEYWELL. THIS DRAWING IS NOT TO BE COPIED OR USED WITHOUT THE APPROVAL OF MICRO SWITCH.

CHARACTERISTICS	ELECTRICAL DATA	SCALE FULL
OPERATING FORCE - - - - - 9-14 OZ	CONTACT ARRANGEMENT P P D T	DO NOT SCALE PRINT
RELEASE FORCE - - - - - 3 OZ MIN	UL LISTED-FILE E12252 CODE L59	UNLESS OTHERWISE NOTED DIMENSIONS ARE IN INCHES
DIFFERENTIAL TRAVEL - - - .195-.305	10A-125 OR 250 VAC	TOLERANCES ARE:
OVERTRAVEL - - - - - .031 MIN	0.3A-125 VDC; 0.15A-250 VDC	ONE PLACE (.0) ± .030 TWO PLACE (.00) ± .015 THREE PLACE (.000) ± .005 ANGLES ± .005
		WEIGHT .085 LB