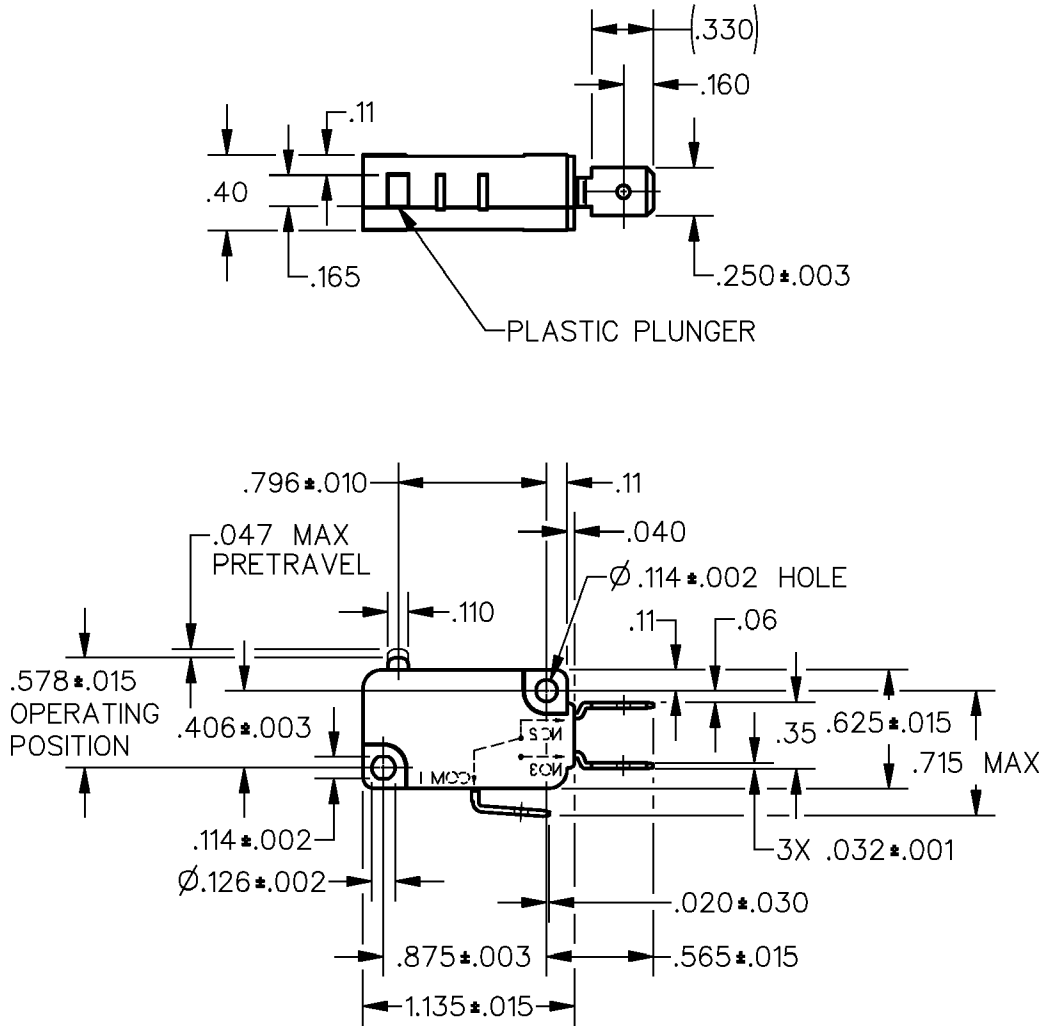


CATALOG LISTING
V7-5D17E9
PAGE 1 OF 1
RELEASE NO. PR-22719
REPLACES
ISSUE 4
CHECK
REVISIONS
A REL PR22719
DCS 10 APR 97
B CO- 93311
TSM 26 OCT 98
C 0005782
RJ 04 JUN 04
CHECK
04 JUN 04
AK
CHECK
10 APR 97
DRAWN
FORMTEK
DCS



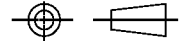
NOTES

- 1 - IN INSPECTION, DO NOT BURN OUT - GOLD CONTACTS
- 2 - IN INSPECTION, DO NOT EXCEED 10 VDC, .1A RESISTIVE LOAD
- 3 - INSPECT SWITCH RESISTANCE PER CONTROL PLAN

ANSI Y14.5M-1982 APPLIES

THIS DRAWING COVERS A PROPRIETARY ITEM AND IS THE PROPERTY OF MICRO SWITCH, A DIVISION OF HONEYWELL. THIS DRAWING IS NOT TO BE COPIED OR USED WITHOUT THE APPROVAL OF MICRO SWITCH.

THIRD ANGLE PROJECTION



CHARACTERISTICS	ELECTRICAL DATA	SCALE FULL	DO NOT SCALE PRINT
OPERATING FORCE --- 15 GRAMS MAX	CONTACT ARRANGEMENT S P D T	UNLESS OTHERWISE SPECIFIED TOLERANCES ARE ONE PLACE (.0) ±.030 TWO PLACE (.00) ±.015 THREE PLACE (.000) ±.005 ANGLES ± WEIGHT	
DIFFERENTIAL TRAVEL --- .002-.010	L22 1A 125 VAC		
OVERTRAVEL --- .050 MIN			
FREE POSITION --- .625 MAX			
RELEASE TRAVEL --- .010 MIN			

