

DO NOT SCALE FROM THIS PRINT

STYLE	CONTACT	WELD TAB
-01	C-363-01-T	WT-75-01-T
-02	C-363-02-T	WT-10-01-T

DESIGNED & DIMENSIONED IN MILLIMETERS [INCHES]

FC5-XX-XX-X-WT-X-XX

No OF POSITION
-15, -20, -25

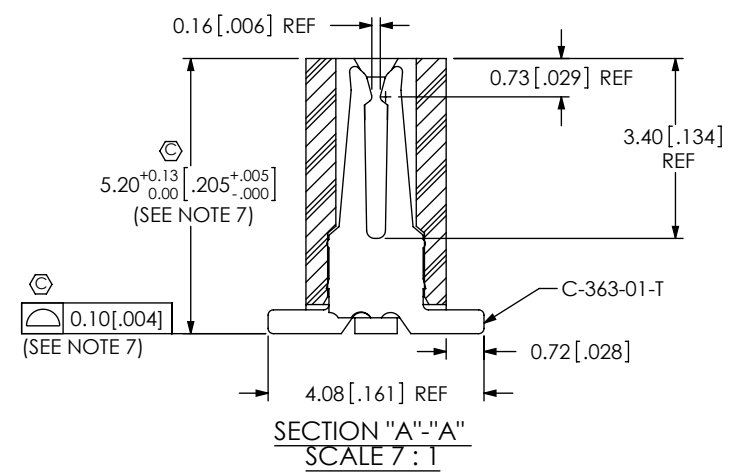
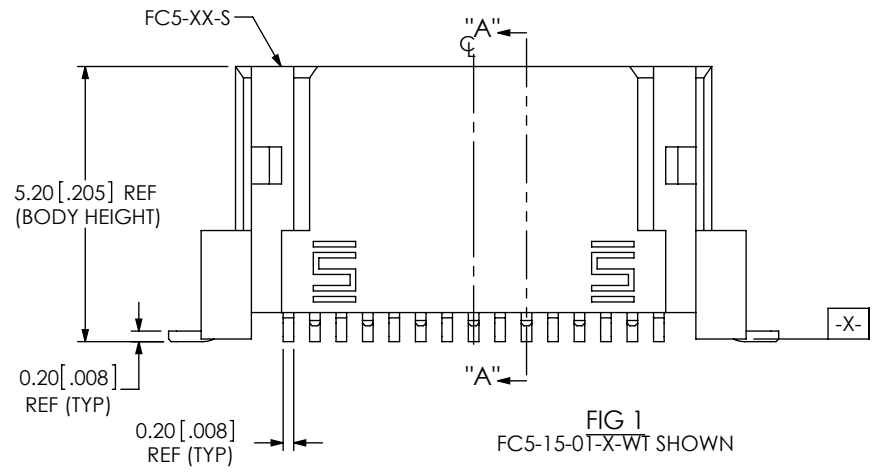
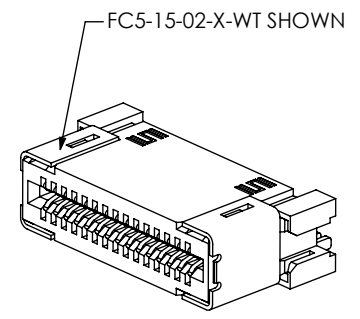
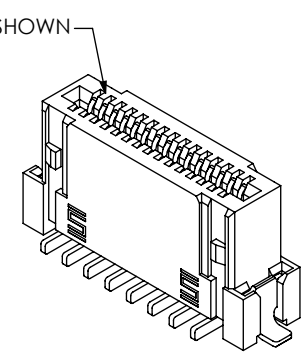
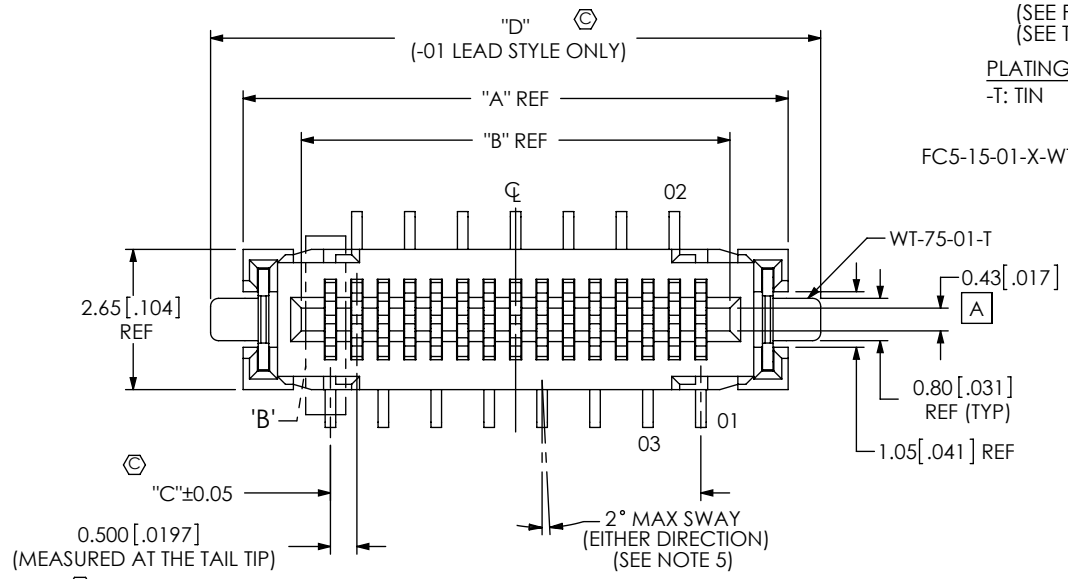
LEAD STYLE
-01: VERTICAL (SEE FIG 1)
-02: HORIZONTAL (SEE FIG 2, SHT 2) (SEE TABLE 1)

PLATING SPECIFICATION
-T: TIN

OPTION
-TR: TAPE & REEL PACKAGING

OPTION
-K: DOT
DOT APPLICATOR-KAPTON TAPE (USE: K-DOT-.138-.250-.005) (FOR -01 LEAD STYLE ONLY) (SEE NOTE 6)

WELD TAB (SEE TABLE 1)



NOTES:

1. Ⓢ REPRESENTS A CRITICAL DIMENSION.
2. BURR ALLOWANCE: 0.038 [.0015] MAX.
3. MAXIMUM CUT FLASH: 0.25 [.010].
4. MINIMUM PUSHOUT FORCE: .5 LB.
5. TAIL SWAY MUST BE IN SAME DIRECTION ON ALL CONTACT TAILS.
6. KAPTON PAD (-K) AVAILABLE ON ALL POSITIONS FOR LEAD STYLE -01 TR OPTION.
7. MEASUREMENT INCLUDES WT'S.
8. NOTE DELETED.

UNLESS OTHERWISE SPECIFIED, DIMENSIONS ARE IN MILLIMETERS.
TOLERANCES ARE:
DECIMALS ANGLES
X.X: ±0.3 [.01] 2°
X.XX: ±0.13 [.005]
X.XXX: ±0.051 [.0020]

PROPRIETARY NOTE
THIS DOCUMENT CONTAINS INFORMATION CONFIDENTIAL AND PROPRIETARY TO SAMTEC, INC. AND SHALL NOT BE REPRODUCED OR TRANSFERRED TO OTHER DOCUMENTS OR DISCLOSED TO OTHERS OR USED FOR ANY PURPOSE OTHER THAN THAT WHICH IT WAS OBTAINED WITHOUT THE EXPRESSED WRITTEN CONSENT OF SAMTEC, INC.



520 PARK EAST BLVD, NEW ALBANY, IN 47150
PHONE: 812-944-6733 FAX: 812-948-5047
e-Mail: info@SAMTEC.com code: 55322

MATERIAL: DO NOT SCALE DRAWING SHEET SCALE: 7:1
INSULATOR: LCP, COLOR: BLACK
CONTACT: COPPER ALLOY
WELD TABS: BRASS

DESCRIPTION: 0.5MM SOCKET

DWG. NO. FC5-XX-XX-X-WT-X-XX

TABLE 2					
No OF POS	"A"	"B"	"C"	"D"	"E"
-15	10.30 [0.406]	8.10 [0.319]	7.00 [0.276]	11.53 [0.454]	3.40 [0.134]
-20	12.80 [0.504]	10.60 [0.417]	9.50 [0.374]	14.03 [0.552]	4.65 [0.183]
-25	15.30 [0.602]	13.10 [0.516]	12.00 [0.472]	16.53 [0.651]	5.90 [0.232]

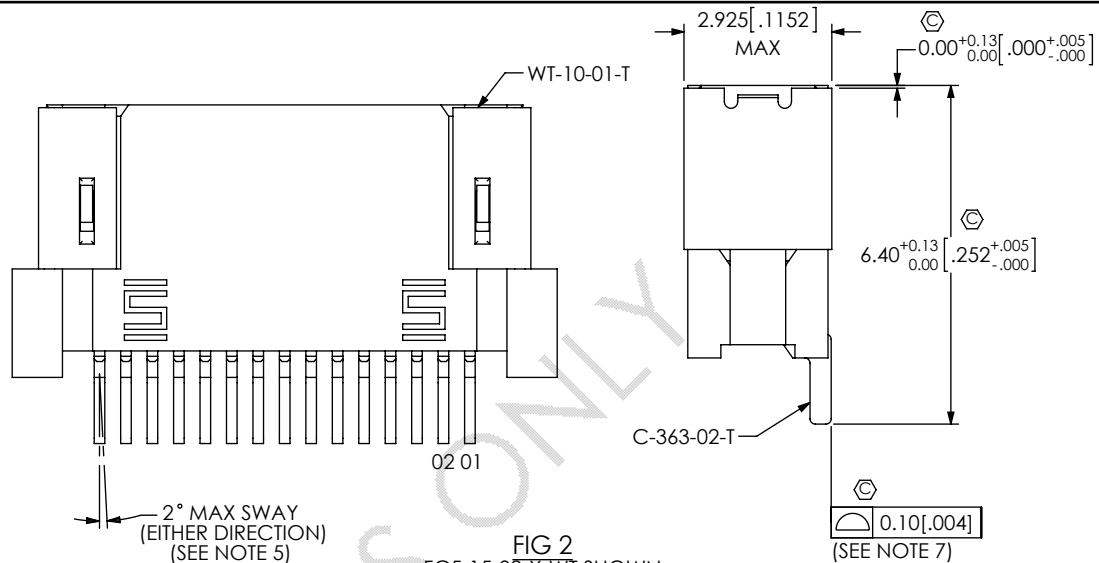


FIG 2
FC5-15-02-X-WT SHOWN
SAME AS FIG 1, EXCEPT AS SHOWN

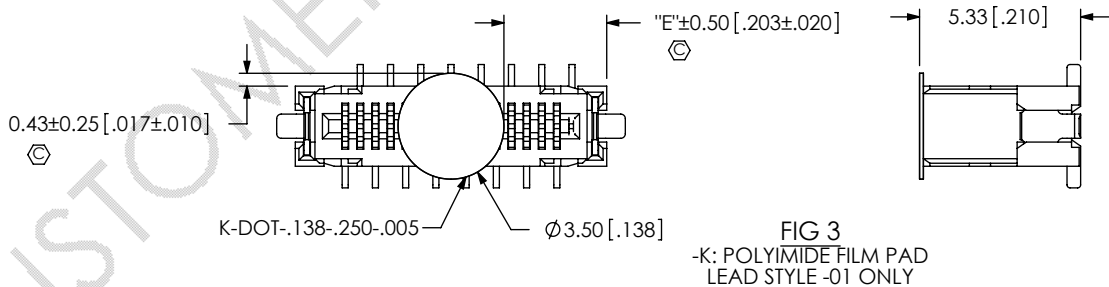
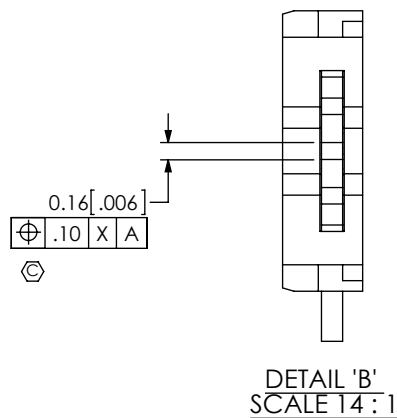
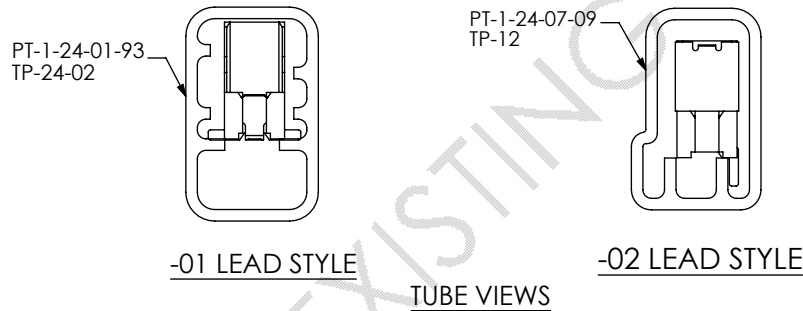


FIG 3
-K: POLYIMIDE FILM PAD
LEAD STYLE -01 ONLY



<p>PROPRIETARY NOTE THIS DOCUMENT CONTAINS INFORMATION CONFIDENTIAL AND PROPRIETARY TO SAMTEC, INC. AND SHALL NOT BE REPRODUCED OR TRANSFERRED TO OTHER DOCUMENTS OR DISCLOSED TO OTHERS OR USED FOR ANY PURPOSE OTHER THAN THAT WHICH IT WAS OBTAINED WITHOUT THE EXPRESSED WRITTEN CONSENT OF SAMTEC, INC.</p> <p>DO NOT SCALE DRAWING</p> <p>SHEET SCALE: 8:1</p>		
	<p>520 PARK EAST BLVD, NEW ALBANY, IN 47150 PHONE: 812-944-6733 FAX: 812-948-5047 e-Mail: info@SAMTEC.com code: 55322</p>	
	<p>DESCRIPTION: 0.5MM SOCKET</p>	
	<p>DWG. NO. FC5-XX-XX-X-WT-X-XX</p>	
<p>BY: DUKES Z 2/28/2011</p>		<p>SHEET 2 OF 2</p>