

REVISION Z

DO NOT SCALE FROM THIS PRINT

TABLE 2

No. OF POS	"C"	"D"
-016	.838 [21.27]	.788 [20.00]
-032	1.625 [41.28]	1.575 [40.01]
-048	2.413 [61.28]	2.363 [60.01]
*-064	3.200 [81.28]	3.150 [80.01]
*-080	3.988 [101.28]	3.938 [100.01]

* = SEE NOTES 10, 11 & 13

ASO ONLY (APPLICATION SPECIFIC ORDER)

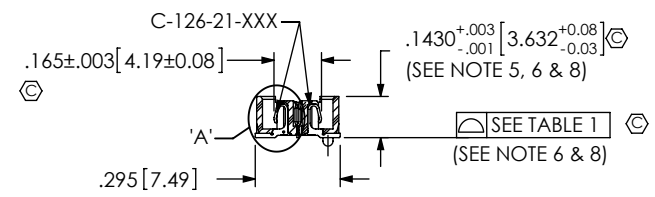
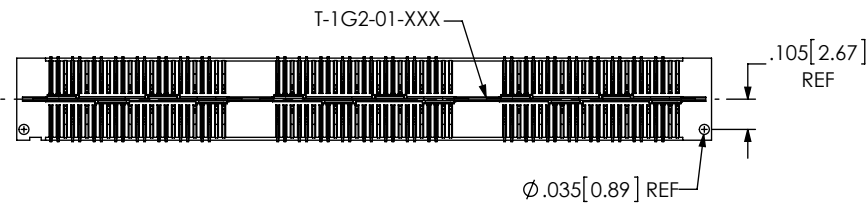
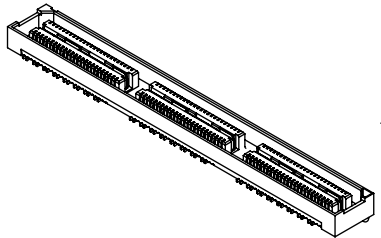
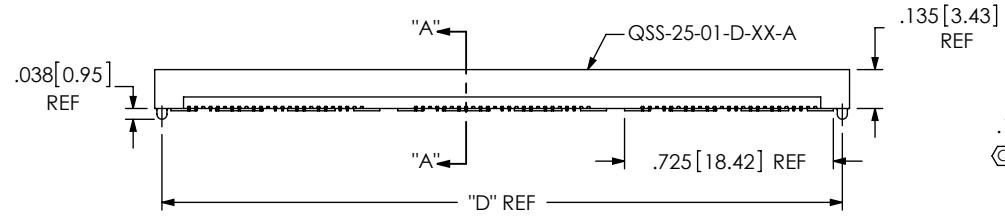
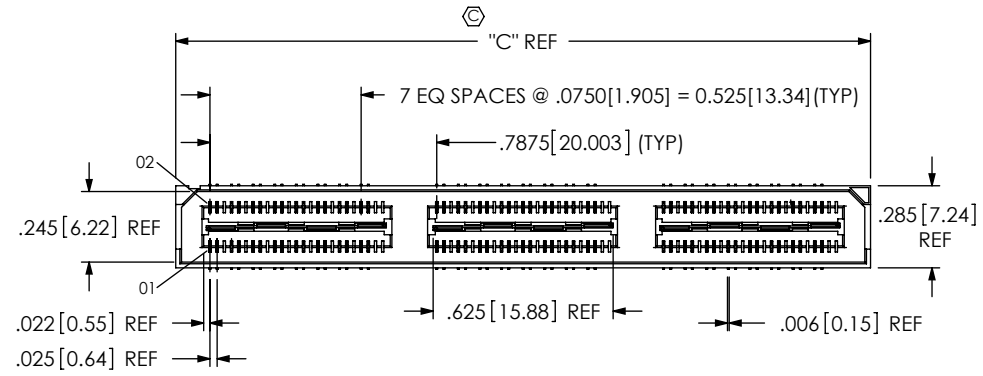
TABLE 1

No OF POSITIONS	COPLANARITY (INCLUDES GND PLANE)
-016 THRU -032	.004[0.10]
-048, *-064, *-080	.006[0.15]

* = SEE NOTES 10, 11 & 13

QSS-XXX-XX-XXX-D-DP-XXX

- No OF POSITIONS
-016, -032, -048, *-064, *-080 (PER ROW)
* SEE NOTES 10, 11 & 13
- LEAD STYLE
-01: .1430[3.632]
- PLATING SPECIFICATION (SEE NOTES 7 & 9)
-F: 3µ" FLASH SELECTIVE GOLD IN CONTACT AREA, MATTE TIN ON TAIL (USE C-126-21-F & T-1G2-01-F) (SEE NOTE 7)
-L: 10µ" LIGHT SELECTIVE GOLD, IN CONTACT AREA, MATTE TIN ON TAIL (USE C-126-21-L & T-1G2-01-L)
-H: 30µ" HEAVY GOLD IN CONTACT AREA, 3µ" GOLD ON TAIL (USE C-126-21-H & T-1G2-01-G)
-STL: 30µ" HEAVY SELECTIVE GOLD IN CONTACT AREA, TIN LEAD ON TAIL (USE C-126-21-STL & T-1G2-01-STL)
-FTL: 3µ" FLASH SELECTIVE GOLD IN CONTACT AREA, TIN LEAD ON TAIL (USE C-126-21-FTL & T-1G2-01-FTL)
- OPTION
-A: ALIGNMENT PINS (USE QSS-25-01-D-XX-A) (NOT AVAILABLE WITH -LC)
-LC: LOCKING CLIPS (SEE NOTE 12) (USE LC-08-TM-01) (SEE FIG 2, SHT 2) (NOT AVAILABLE WITH -A)
-K: POLYIMIDE FILM PAD (USE K-850-650) (SEE FIG 3, SHT 2)
-TR: TAPE & REEL (48 POS MAX) (32 POS MAX FOR -GP OPTION)
-GP: GUIDE POSTS (USE QSS-25-01-D-XX-X-GP) (SEE FIG 4, SHT 3) (NOT AVAILABLE WITH -LS2)
-LS2: LOCKING SCREW (USE QSS-25-01-D-XX-LS2) (SEE FIG 5, SHT 3) (NOT AVAILABLE WITH -GP) (FOR MATING WITH QTS-...-RA-LS2)
- DIFFERENTIAL PAIRS
ROW SPECIFICATION
-D: DOUBLE (USE QSS-25-XX-D-XX)
- No OF BANKS



SECTION "A"- "A"

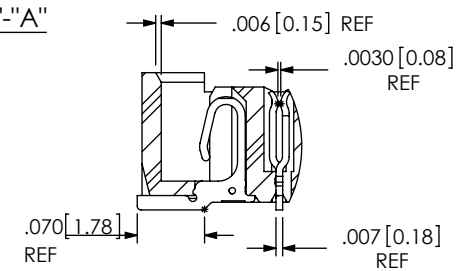


FIG 1

-A: ALIGNMENT PIN OPTION (QSS-048-01-XXX-D-DP-A SHOWN)

DETAIL 'A' SCALE 5:1

NOTES:

1. MINIMUM CONTACT RETENTION: 5 OZ
2. MINIMUM GROUND PLANE RETENTION: 8 OZ
3. Ⓢ REPRESENTS A CRITICAL DIMENSION.
4. PARTS ARE MOLD TO POSITION.
5. MAX VARIANCE: .002[0.05].
6. DIMENSION APPLIES TO CONTACTS AND GROUND PLANES, INDEPENDENT OF EACH OTHER.
7. -L PLATING CAN BE SUBSTITUTED FOR -F PLATING.
8. GROUND PLANE PRESS HEIGHT MUST BE .003[.08] LESS THAN THE MAXIMUM HEIGHT OR .001[0.03] GREATER THAN THE MINIMUM HEIGHT OF THE SIGNAL PIN.
9. MAY SUBSTITUTE C-126-01-XXX FOR C-126-21-XXX.
10. FOR NEW APPLICATIONS REQUIRING THESE POSITIONS, PLEASE CONTACT SAMTEC INTERCONNECT PROCESSING GROUP.
11. FOR -064 AND -080 POSITIONS USE C-269-11-XXX. DO NOT SUB C-126-01-XXX
12. DUE TO THE HIGH AMOUNT OF INSERTION FORCE NEEDED, THE -LC OPTION IS NOT COMPATIBLE WITH AUTO PLACEMENT. SAMTEC RECOMMENDS MANUAL PLACEMENT FOR ALL ASSEMBLIES WITH THE -LC OPTION.
13. AVAILABLE FOR EXISTING CUSTOMERS ONLY.

UNLESS OTHERWISE SPECIFIED, DIMENSIONS ARE IN INCHES. TOLERANCES ARE: DECIMALS ANGLES .XX: ±.01[.3] 2° .XXX: ±.005[.13] .XXXX: ±.0020[.05]	PROPRIETARY NOTE THIS DOCUMENT CONTAINS INFORMATION CONFIDENTIAL AND PROPRIETARY TO SAMTEC, INC. AND SHALL NOT BE REPRODUCED OR TRANSFERRED TO OTHER DOCUMENTS OR DISCLOSED TO OTHERS OR USED FOR ANY PURPOSE OTHER THAN THAT WHICH IT WAS OBTAINED WITHOUT THE EXPRESSED WRITTEN CONSENT OF SAMTEC, INC.		
		520 PARK EAST BLVD, NEW ALBANY, IN 47150 PHONE: 812-944-6733 FAX: 812-948-5047 e-Mail: info@SAMTEC.com code 55322	
MATERIAL: DO NOT SCALE DRAWING	SHEET SCALE: 1.5:1	DESCRIPTION: .635mm DIFFERENTIAL PAIRS HS SOCKET ASSEMBLY	
INSULATOR: LCP, UL94V-0; COLOR: BLACK CONTACT: PHOS BRONZE GROUND PLANE: PHOS BRONZE		DWG. NO. QSS-XXX-XX-XXX-D-DP-XXX	
F:\DWG\MISC\MKTG\QSS-XXX-XX-XXX-D-DP-XXX-MKT.SLDDRW		BY: KEVIN B 07/10/2000	SHEET 1 OF 3

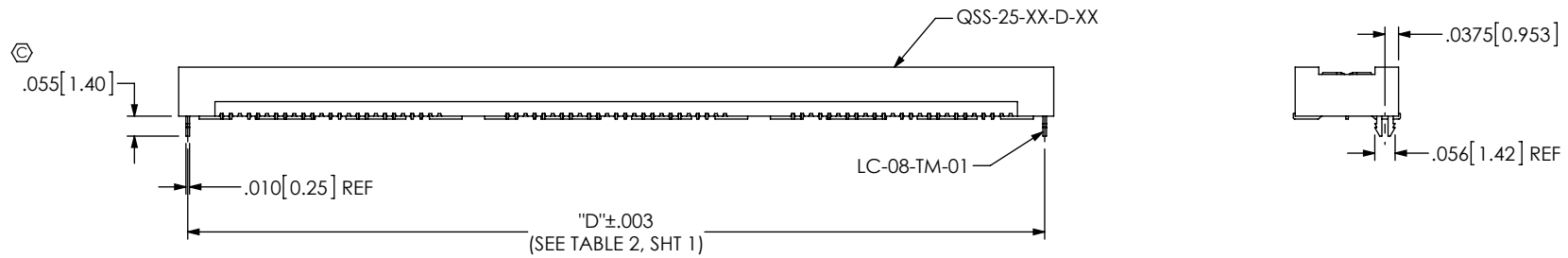


FIG 2
 -LC: LOCKING CLIP OPTION
 (QSS-048-01-XXX-D-DP-LC SHOWN)
 (DIFFERENT AS SHOWN, OTHERWISE SAME AS FIG 1)

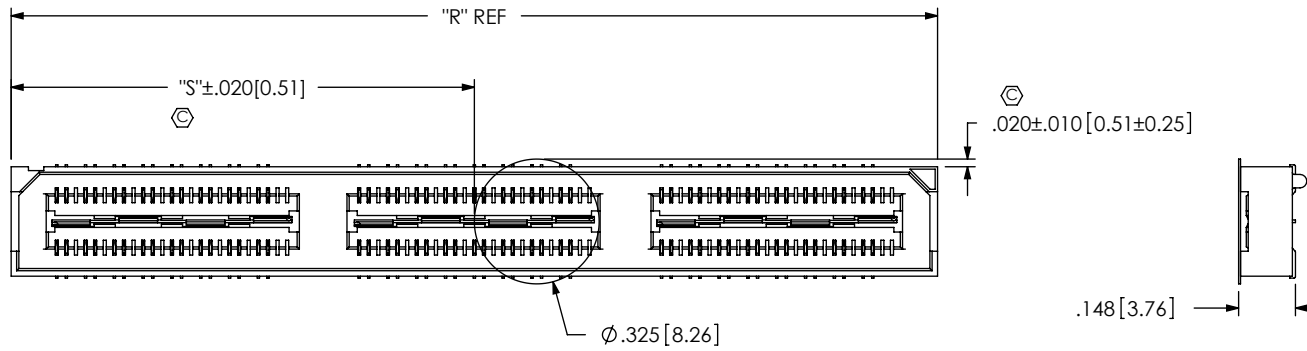


FIG 3
 -K: POLYIMIDE FILM PAD
 (USE K-850-650)

TABLE 3

No OF POS	"R"			"S"		
	-LC, -A	-GP	-LS2	-LC, -A	-GP	-LS2
-016	.838 [21.27]	1.217 [30.90]	1.338 [33.97]	.256 [6.51]	.446 [11.32]	.506 [12.86]
-032	1.625 [41.28]	2.004 [50.90]	2.125 [53.98]	.650 [16.51]	.840 [21.32]	.900 [22.86]
-048	2.413 [61.28]	2.792 [70.90]	2.913 [73.98]	1.044 [26.51]	1.233 [31.32]	1.294 [32.86]
*-064	3.200 [81.28]	3.579 [90.91]	3.700 [93.98]	1.438 [36.51]	1.627 [41.33]	1.688 [42.86]
*-080	3.988 [101.28]	4.367 [110.91]	4.488 [113.98]	1.831 [46.51]	2.021 [51.33]	2.081 [52.86]

* = SEE NOTES 10, 11 & 13

PROPRIETARY NOTE
 THIS DOCUMENT CONTAINS INFORMATION
 CONFIDENTIAL AND PROPRIETARY TO
 SAMTEC, INC. AND SHALL NOT BE REPRODUCED
 OR TRANSFERRED TO OTHER DOCUMENTS OR
 DISCLOSED TO OTHERS OR USED FOR ANY
 PURPOSE OTHER THAN THAT WHICH IT WAS
 OBTAINED WITHOUT THE EXPRESSED WRITTEN
 CONSENT OF SAMTEC, INC.

DO NOT SCALE DRAWING

SHEET SCALE: 2:1

samtec

520 PARK EAST BLVD, NEW ALBANY, IN 47150
 PHONE: 812-944-6733 FAX: 812-948-5047
 e-Mail info@SAMTEC.com code 55322

DESCRIPTION:
 .635mm DIFFERENTIAL PAIRS HS SOCKET ASSEMBLY

DWG. NO.
QSS-XXX-XX-XXX-D-DP-XXX

BY: KEVIN B 07/10/2000 SHEET 2 OF 3

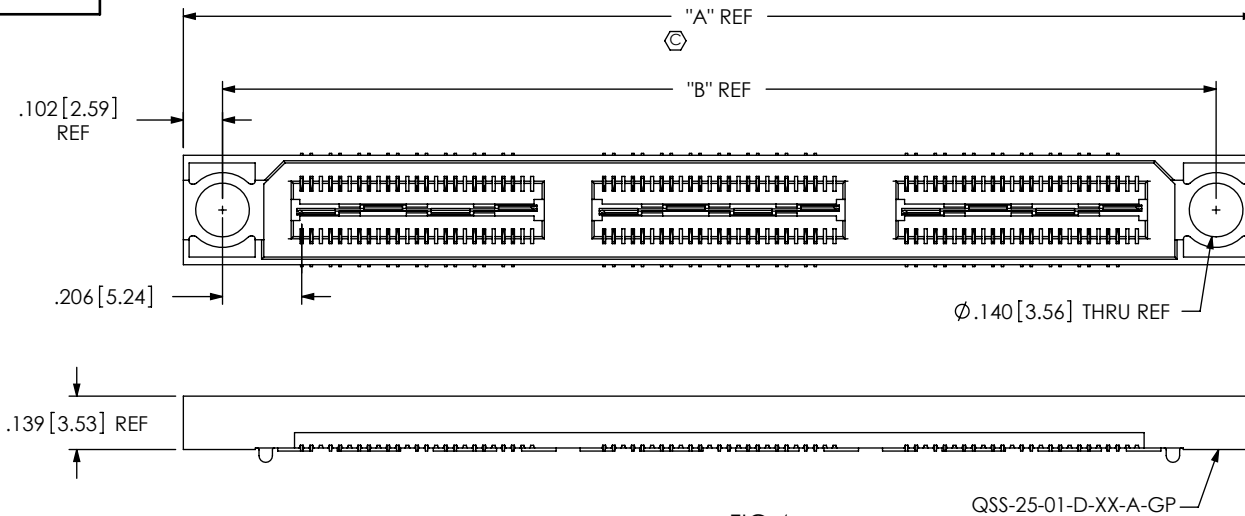


FIG 4
 -GP: GUIDE POST OPTION
 (QSS-048-01-XXX-D-DP-GP SHOWN)
 (DIFFERENT AS SHOWN, OTHERWISE SAME AS FIG 1)
 (32 POS MAX FOR TAPE & REEL OFFERING)

POSITIONS	"A"	"B"
-016	1.217[30.90]	1.013[25.72]
-032	2.004[50.90]	1.800[45.72]
-048	2.792[70.90]	2.588[65.72]
*-064	3.580[90.91]	3.375[85.73]
*-080	4.367[110.9]	4.163[105.73]

* = SEE NOTES 10, 11 & 13

QSS-25-01-D-XX-A-GP

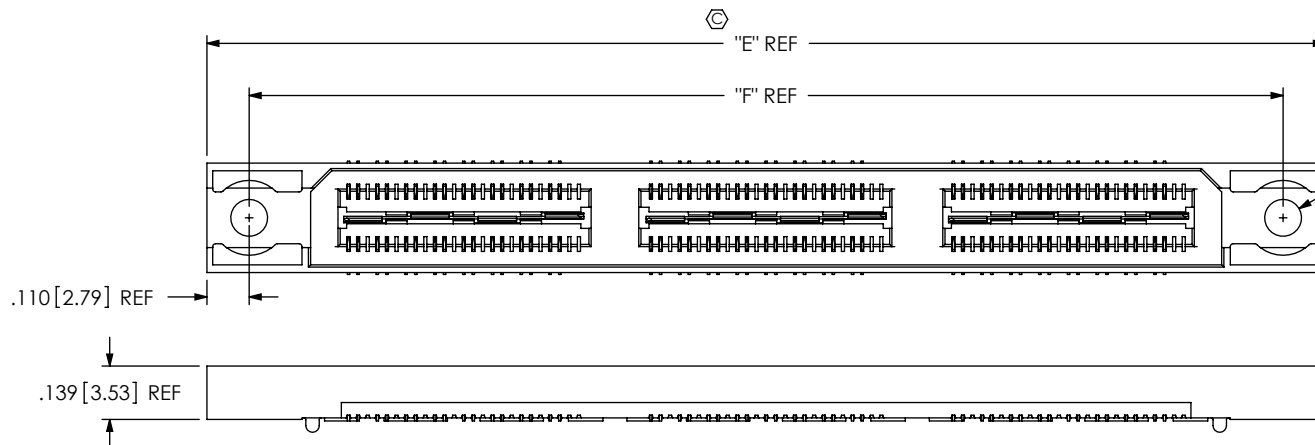


FIG 5
 -LS2: LOCKING SCREW OPTION
 (QSS-048-01-XXX-D-DP-LS2 SHOWN)
 (DIFFERENT AS SHOWN, OTHERWISE SAME AS FIG 1)
 (NOT AVAILABLE WITH -GP OPTION)

Ø.096 [2.44] REF
 (CLEARANCE HOLE FOR USE WITH 2-56 SCREW)

POS	"E"	"F"
-016	1.338 [33.97]	1.118 [28.38]
-032	2.125 [53.98]	1.905 [48.39]
-048	2.913 [73.98]	2.693 [68.39]
*-064	3.700 [93.98]	3.480 [88.39]
*-080	4.488 [113.98]	4.268 [108.39]

* = SEE NOTES 10, 11 & 13

PROPRIETARY NOTE
 THIS DOCUMENT CONTAINS INFORMATION
 CONFIDENTIAL AND PROPRIETARY TO
 SAMTEC, INC. AND SHALL NOT BE REPRODUCED
 OR TRANSFERRED TO OTHER DOCUMENTS OR
 DISCLOSED TO OTHERS OR USED FOR ANY
 PURPOSE OTHER THAN THAT WHICH IT WAS
 OBTAINED WITHOUT THE EXPRESSED WRITTEN
 CONSENT OF SAMTEC, INC.

DO NOT SCALE DRAWING

SHEET SCALE: 2:1

samtec

520 PARK EAST BLVD, NEW ALBANY, IN 47150
 PHONE: 812-944-6733 FAX: 812-948-5047
 e-Mail: info@SAMTEC.com code 55322

DESCRIPTION:
 .635mm DIFFERENTIAL PAIRS HS SOCKET ASSEMBLY

DWG. NO.
QSS-XXX-XX-XXX-D-DP-XXX

BY: KEVIN B 07/10/2000 SHEET 3 OF 3