

REVISION AD

DO NOT SCALE FROM THIS PRINT

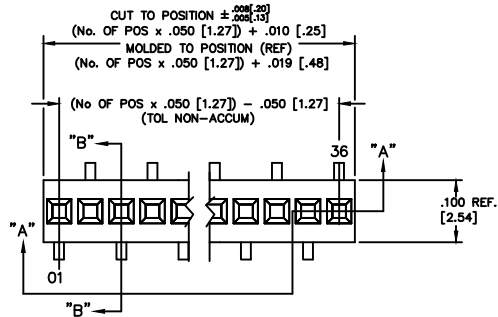
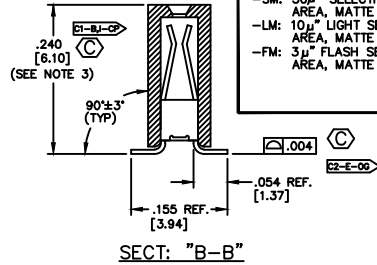
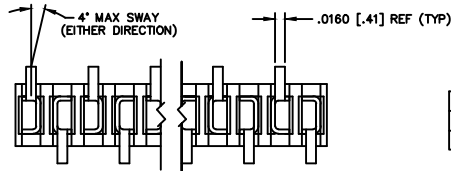
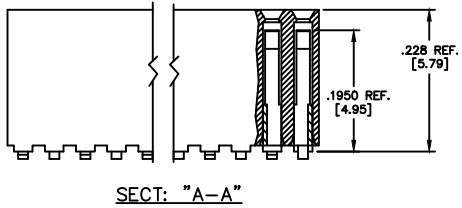
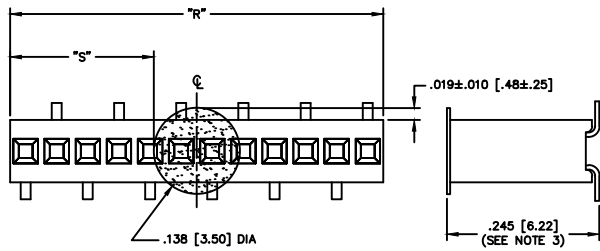


FIG. 1



CRITICAL DIMENSION INSPECTION TABLE	
ASSEMBLY OPERATION	IN-PROCESS INSPECTOR
BREAK CARRIER	C1



"R" = USE MEASURED DIMENSION (REF)
 "S" = {("R" - .138 [3.50]) / 2} ± .020 [.51]

FIG. 3

-K: POLYAMIDE FILM PAD
 AVAILABLE ON POS 7 - 36 ONLY

RSM-1XX-XX-XXX-S-X

BODY LENGTH SPECIFICATION
 -02 THRU -36 POSITIONS
 (SEE NOTE 2)

AD LEAD STYLE
 -02: C-64-02-X

PLATING SPECIFICATIONS

- S: 30μ" SELECTIVE GOLD IN CONTACT AREA, MATTE TIN ON TAIL
- F: 3μ" FLASH SELECTIVE GOLD IN CONTACT AREA, MATTE TIN ON TAIL
- L: 10μ" LIGHT SELECTIVE GOLD IN CONTACT IN CONTACT AREA, MATTE TIN ON TAIL
- T: MATTE TIN CONTACT AND TAIL
- STL: 30μ" SELECTIVE GOLD IN CONTACT CONTACT AREA, TIN/LEAD (90/10+/-5%) TAIL
- TM: MATTE TIN CONTACT AND TAIL
- SM: 30μ" SELECTIVE GOLD IN CONTACT AREA, MATTE TIN ON TAIL
- LM: 10μ" LIGHT SELECTIVE GOLD IN CONTACT AREA, MATTE TIN ON TAIL
- FM: 3μ" FLASH SELECTIVE GOLD IN CONTACT AREA, MATTE TIN ON TAIL

DIMENSIONS ARE IN INCHES		UNLESS OTHERWISE NOTED		TOLERANCES ARE:	
ONE PLACE DECIMALS: ± .1	TWO PLACE DECIMALS: ± .01	THREE PLACE DECIMALS: ± .005	FOUR PLACE DECIMALS: ± .0020	ANGLES	± 5°

OPTIONS

- P: PICK AND PLACE PAD (USE PPP-20)(SEE FIG. 2) (AVAILABLE ON POS. 6 THRU 36 ONLY)
- K: POLYAMIDE FILM PAD (AVAILABLE ON POS. 7 THRU 36 ONLY) (.005 [.13] THICKNESS WITH SILICONE ADHESIVE)(SEE FIG 3) (USE K-500-300)
- TR: TAPE AND REEL

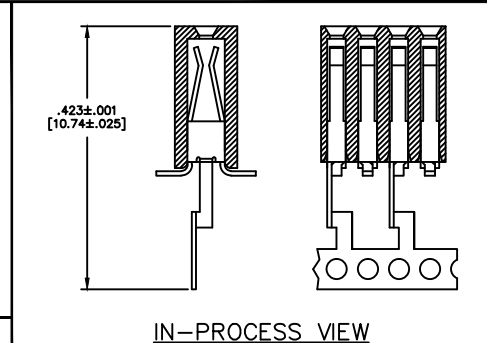
BODY SPECIFICATION

- S: SINGLE ROW (USE RSM-XX-S)

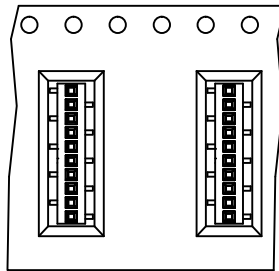
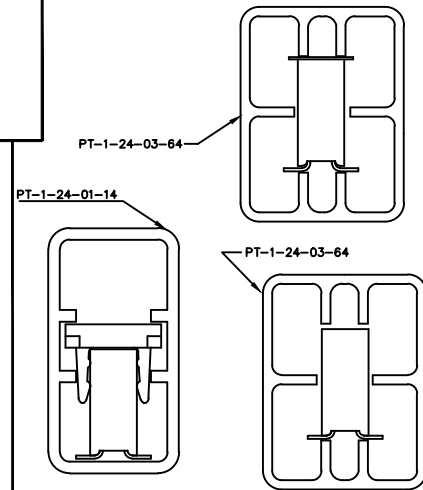
NOTES:

1. PIN ONE TO BE IN DIRECTION OF ARROW ON TUBE
2. FOR ODD POSITIONS, LOSE ONE PIN PER CUT
3. FOR EVEN POSITIONS, LOSE TWO PINS PER CUT
4. MEASURED AT BEND RADIUS
5. MINIMUM RETENTION: 1.0 LB.
6. CUT FLASH TO BE .010" MAX WITH NO FLASH ALLOW IN HOLES OR EXTENDING BELOW LEADS.
7. CONTACTS NOT TO BE INTERLEAVED.
8. Ⓢ REPRESENTS A CRITICAL DIMENSION.
9. INSULATOR MATERIAL: BLACK, LCP, UL 94 VO

OPTION	TUBE	PLUG
-P	PT-1-24-01-14	TP-03
-	PT-1-24-03-64	TP-24
-K	PT-1-24-03-64	TP-24



IN-PROCESS VIEW

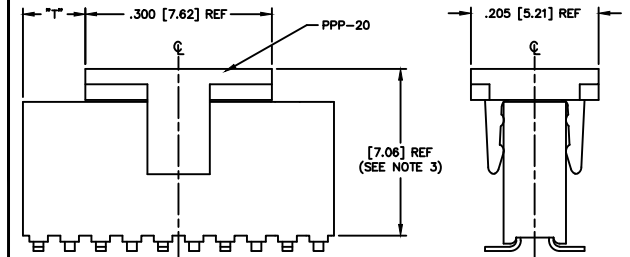


USER DIRECTION OF UNREELING

POCKET NOT DETAILED

FIG. 4

-TR: TAPE AND REEL



"R" = USE MEASURED DIMENSION (REF)
 "T" = {("R" - .300)/2} ± .020

FIG. 2

-P: PICK AND PLACE PAD
 AVAILABLE ON POS 6 - 36 ONLY

PROPRIETARY NOTE
 THIS DOCUMENT CONTAINS INFORMATION THAT IS UNCLASSIFIED AND PUBLIC RELEASE IS UNLIMITED. IT IS THE PROPERTY OF SAMTEC AND IS LOANED TO YOUR COMPANY. IT IS TO BE USED ONLY FOR THE PROJECT AND FOR WHICH IT WAS ISSUED. IT IS NOT TO BE REPRODUCED, COPIED, OR TRANSMITTED IN ANY FORM OR BY ANY MEANS, ELECTRONIC OR MECHANICAL, INCLUDING PHOTOCOPYING, RECORDING, OR BY ANY INFORMATION STORAGE AND RETRIEVAL SYSTEM, WITHOUT THE WRITTEN PERMISSION OF SAMTEC.

samtec
 820 PARK EAST BLVD. NEW ALBANY, INDIANA 47150
 PHONE (812) 944-8733 P.O. BOX 1147
 CODE 05322
 MADE BY REG REMOVAL 11-24-92
 CHECKED BY: _____
 RSM-1XX-XX-XXX-S-X
 SHEET 1 OF 1