

DO NOT SCALE FROM THIS PRINT

TABLE 1	
LEAD STYLE	BOARD SPACE WHEN MATED WITH TOLC
-02	.250 [6.35]

SOLC-1XX-XX-XXX-Q-X

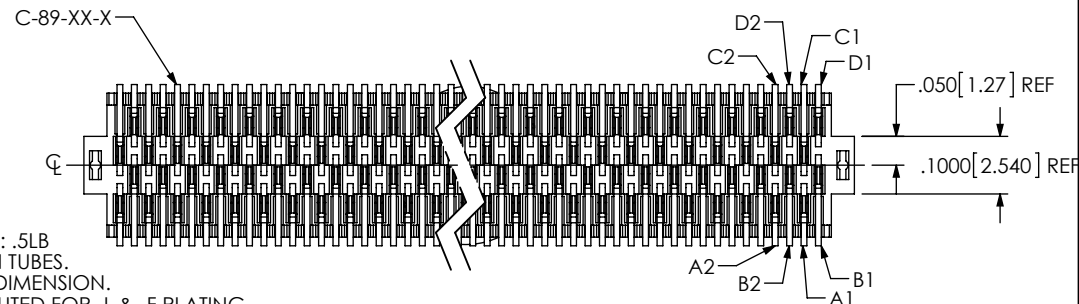
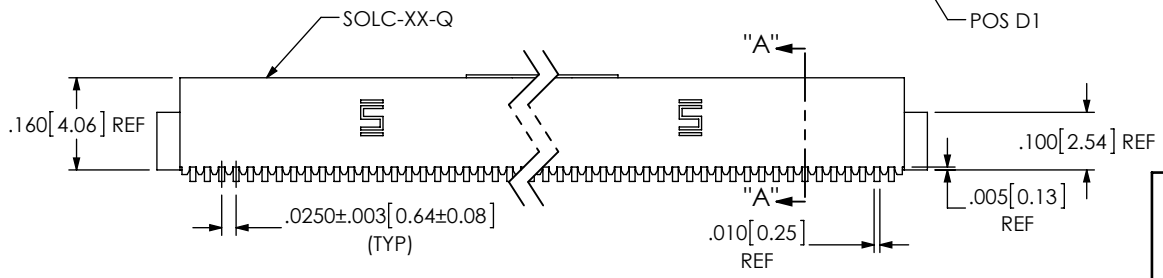
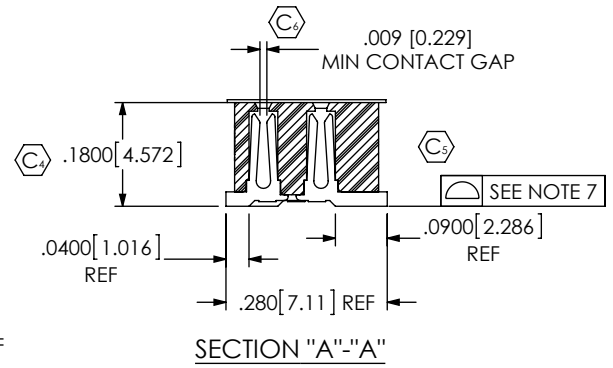
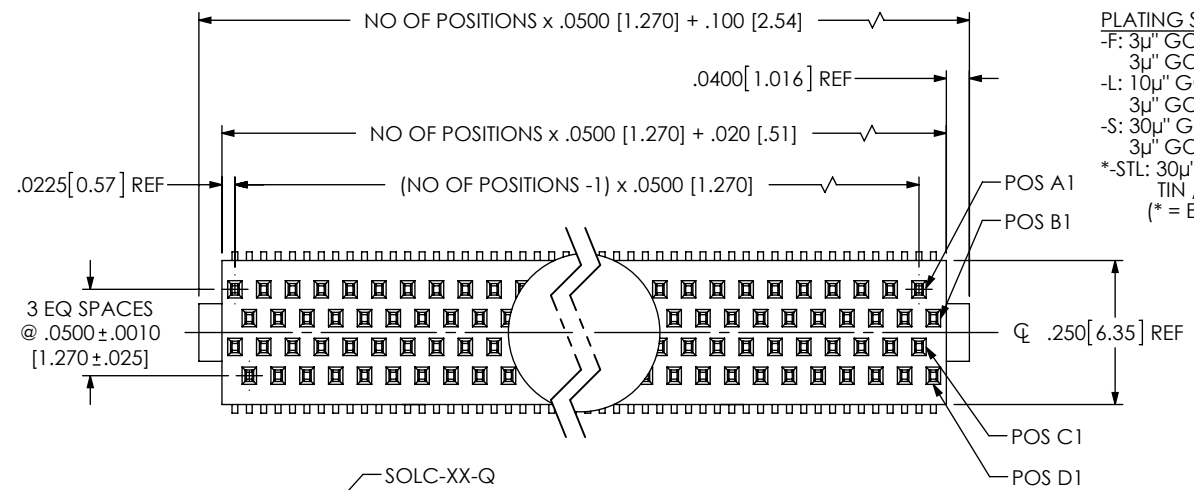
NO OF POSITIONS
-05, -10, -15, -20, -25
-30, -35, -40, -45, -50
(PER ROW)

LEAD STYLE
-02: (USE C-89-01-X)

OPTIONS
-LC: LOCKING CLIP (SEE FIG 2, SHT 2) (SEE NOTE 5)
NOT AVAILABLE WITH -A
-A: ALIGNMENT PINS (SEE FIG 3, SHT 2)
(USE SOLC-XX-Q-A)
(NOT AVAILABLE WITH -LC)
-TR: TAPE & REEL
-P: PICK & PLACE PAD
(USE MPP-07, SEE FIG 4, SHT 2)
-K: POLYIMIDE FILM PAD
(.005 [0.13] THICK W/ SILICONE ADHESIVE) (SEE FIG 5, SHT 2)
(USE K-500-300)

ROW SPEC
-Q: QUAD
(USE SOLC-XX-Q)

PLATING SPEC
-F: 3μ" GOLD IN CONTACT AREA
3μ" GOLD ON TAIL
-L: 10μ" GOLD IN CONTACT AREA
3μ" GOLD ON TAIL
-S: 30μ" GOLD IN CONTACT AREA
3μ" GOLD ON TAIL
*-STL: 30μ" GOLD IN CONTACT AREA
TIN / LEAD ON TAIL
(* = EXISTING CUSTOMERS ONLY)



- NOTES:
1. MINIMUM PUSHOUT FORCE: .5LB
 2. PARTS TO BE PACKAGED IN TUBES.
 3. Ⓢ INDICATES A CRITICAL DIMENSION.
 4. -S PLATING CAN BE SUBSTITUTED FOR -L & -F PLATING.
 5. DUE TO THE HIGH AMOUNT OF INSERTION FORCE NEEDED, THE -LC OPTION IS NOT COMPATIBLE WITH AUTO PLACEMENT. SAMTEC RECOMMENDS MANUAL PLACEMENT FOR ALL ASSEMBLIES WITH THE -LC OPTION.
 6. INSULATOR MATERIAL: LCP, UL 94 V0
 7. COPLANARITY:
-05 THRU -30 POSITION: .0040 [0.102]
-35 THRU -50 POSITION: .0060 [0.152]

FIG 1

PACKAGING VIEW

TABLE		
NO OPTION, -LC, -A, -K, -K-LC, -K-A	PT-1-24-11-63	TP-09
-P, -P-LC, -P-A	PT-1-24-01-61	TP-03

PT-1-24-11-63 TUBE
TP-09 PLUG

PT-1-24-01-61 TUBE
TP-03 PLUG

UNLESS OTHERWISE SPECIFIED, DIMENSIONS ARE IN INCHES. TOLERANCES ARE:
DECIMALS ANGLES
.XX: ±.01 [0.3] 5°
.XXX: ±.005 [0.13]
.XXXX: ±.0020 [0.051]

PROPRIETARY NOTE
THIS DOCUMENT CONTAINS INFORMATION CONFIDENTIAL AND PROPRIETARY TO SAMTEC, INC. AND SHALL NOT BE REPRODUCED OR TRANSFERRED TO OTHER DOCUMENTS OR DISCLOSED TO OTHERS OR USED FOR ANY PURPOSE OTHER THAN THAT WHICH IT WAS OBTAINED WITHOUT THE EXPRESSED WRITTEN CONSENT OF SAMTEC, INC.

DO NOT SCALE DRAWING SHEET SCALE: 3:1

MATERIAL:
INSULATOR: VECTRA E130I, COLOR: BLACK
CONTACT: PHOS BRONZE

MAX FLASH ALLOWED: .002 [0.05]
MAX GATE VESTIGE: .002 [0.05]

F:\DWG\MISC\MKTG\SOLC-1XX-XX-XXX-Q-XX-MKT.SLDDRW

520 PARK EAST BLVD. NEW ALBANY, IN 47150
PHONE: 812-944-6733 FAX: 812-948-5047
e-Mail: info@SAMTEC.com eode 55322

DESCRIPTION:
QUAD ROW STAGGERED SMT SOCKET ASM

DWG. NO.
SOLC-1XX-XX-XXX-Q-XX

BY: TIM P. 2/11/2013 SHEET 1 OF 2

FIG 2
-LC OPTION
(DIFFERENT AS SHOWN, OTHER WISE SAME AS FIG 1)

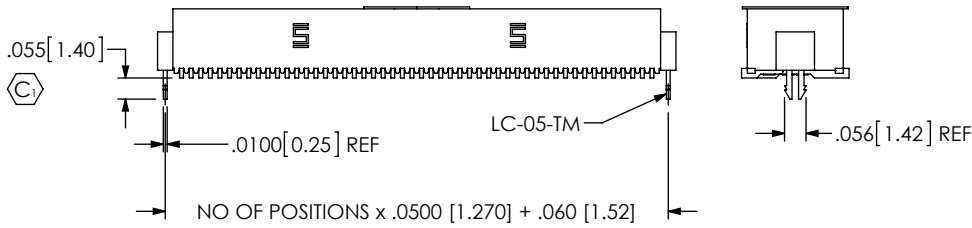


FIG 4
-P OPTION
(DIFFERENT AS SHOWN, OTHER WISE SAME AS FIG 1)

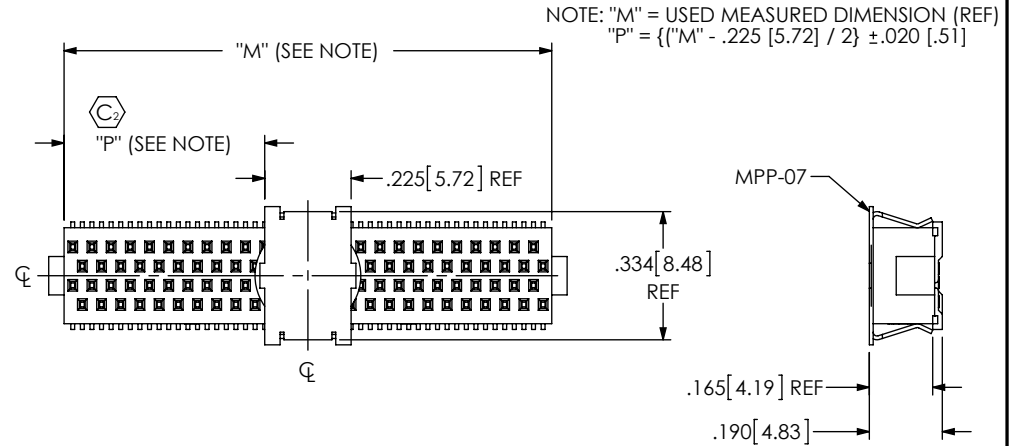


FIG 3
-A MOLDED
(DIFFERENT AS SHOWN, OTHER WISE SAME AS FIG 1)

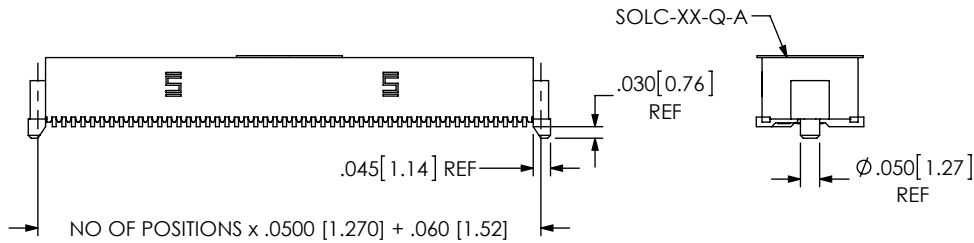
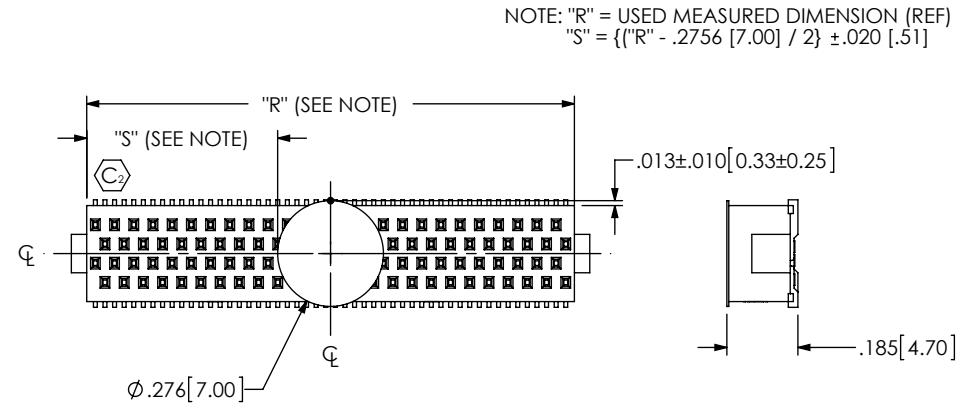


FIG 5
-P POLYIMIDE FILM PAD
(DIFFERENT AS SHOWN, OTHER WISE SAME AS FIG 1)



PROPRIETARY NOTE
THIS DOCUMENT CONTAINS INFORMATION
CONFIDENTIAL AND PROPRIETARY TO
SAMTEC, INC. AND SHALL NOT BE REPRODUCED
OR TRANSFERRED TO OTHER DOCUMENTS OR
DISCLOSED TO OTHERS OR USED FOR ANY
PURPOSE OTHER THAN THAT WHICH IT WAS
OBTAINED WITHOUT THE EXPRESSED WRITTEN
CONSENT OF SAMTEC, INC.

DO NOT SCALE DRAWING

SHEET SCALE: 2:1

samtec

520 PARK EAST BLVD. NEW ALBANY, IN 47150
PHONE: 812-944-6733 FAX: 812-948-5047
e-Mail info@SAMTEC.com code 55322

DESCRIPTION:
QUAD ROW STAGGERED SMT SOCKET ASM

DWG. NO.
SOLC-1XX-XX-XXX-Q-XX

BY: TIM P. 2/11/2013 SHEET 2 OF 2