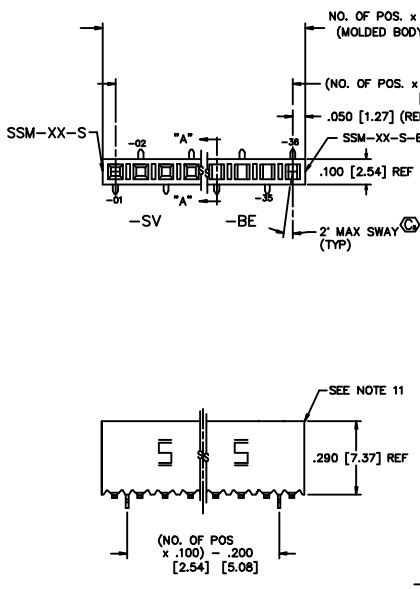


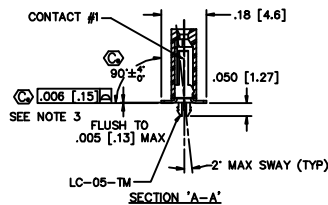
REVISION CB

DO NOT SCALE FROM THIS PRINT

FIGURE 1
VERTICAL MOUNT



- NOTES:
- 1) PUSHOUT FORCE TO BE: 1 lb. MIN.
 - 2) (C) REPRESENTS CRITICAL DIM.
 - 3) COPLANARITY TO BE :
DH: -36 - 28 POS: .008" [.20]
-02 - 27 POS: .006" [.15]
SV,SH: .006" [.15]
 - 4) PACKAGE POS -02 THRU -36 IN TUBES, EXCEPT FOR -02 POS. WITH -SV LEAD STYLE. (SEE SHEET 3, TABLE 2)
 - 5) PACKAGE ONLY POS -04 THRU -36 IN TUBES. (SEE SHEET 3, TABLE 2)
 - 6) PACKAGE ONLY POS -03 THRU -36 IN TUBES. (SEE SHEET 3, TABLE 2)
 - 7) CUT FLASH TO BE .015 [.38] MAX
 - 8) NOTCH OF PPP-12 TO BE ORIENTED TOWARD SAME END AS POSITION 1.
 - 9) ROWS TO BE WITHIN .004[.10] OF ONE ANOTHER.
 - 10) -36 MAX POSITION AVAILABLE, -50 FOR STOCK ONLY.
 - 11) ENDWALL AFTER CUTTING: .033+/- .005 [.84+/- .13]
 - 12) DUE TO THE HIGH AMOUNT OF INSERTION FORCE NEEDED, THE -LC OPTION IS NOT COMPATIBLE WITH AUTO PLACEMENT. SAMTEC RECOMMENDS MANUAL PLACEMENT FOR ALL ASSEMBLIES WITH THE -LC OPTION.
 - 13.) FOR -SV LEAD STYLE: EVEN CUTS LOSE 2 POSITIONS PER CUT; ODD CUTS LOSE 1 POSITION PER CUT.



UNLESS OTHERWISE NOTED

DIMENSIONS ARE IN INCHES

TOLERANCES ARE:

ONE PLACE DECIMALS ±.1 [3] THREE PLACE DECIMALS ± .005 [.13] ANGLES ± 2'

TWO PLACE DECIMALS ±.01 [.3] FOUR PLACE DECIMALS ± .0020 [.051]

TITLE: .100 [2.54] C.L. SURFACE MOUNT SOCKET STRIP

DWG NO: SSM-1XX-XXX-XX-XX-XX-X-XX

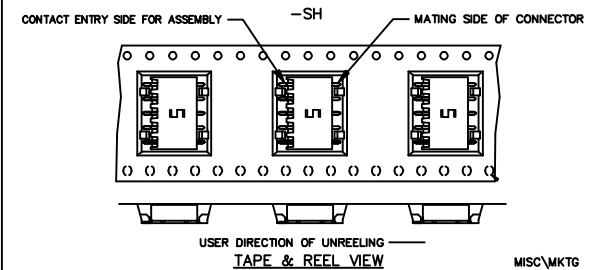
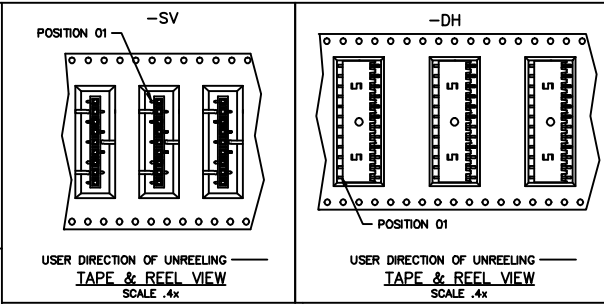
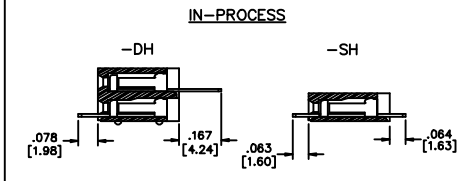
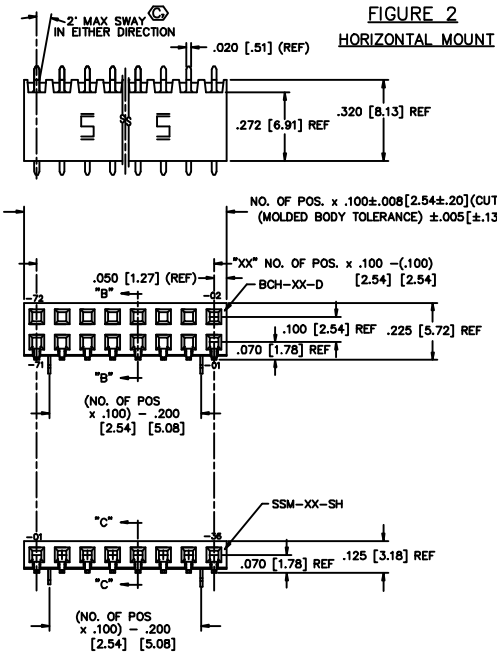
SHEET 1 OF 3

- SSM-1XX-XXX-XX-XX-XX-X-XX
- NO. OF POSITIONS -02 THRU -36 (SEE NOTE 10)
- PLATING SPEC.
- S: SELECTIVE
 - L: LIGHT SELECTIVE
 - T: TIN
 - F: SELECTIVE FLASH GOLD
 - P: GOLD FLASHED PALLADIUM NICKEL (-SV ONLY)
 - STL: SELECTIVE TIN LEAD
 - H: HEAVY GOLD [N/A ON -DH]
 - SM: SELECTIVE MATTE TIN
 - LM: LIGHT SELECTIVE MATTE TIN
 - IM: MATTE TIN
 - FM: FLASH SELECTIVE MATTE TIN
- BODY/LEAD STYLE
- SV: SINGLE VERTICAL (SEE FIGURE 1) USE SSM-XX-S
 - SH: SINGLE HORIZONTAL (SEE FIGURE 2) USE SSM-XX-SH
 - DH: DOUBLE HORIZONTAL (SEE FIGURE 2) USE BCH-XX-D
- OPTION
- BE: BOTTOM ENTRY (ONLY AVAILABLE ON -SV) (FOR SV, USE SSM-XX-S-BE) (SEE FIG. 1)
 - P: PICK -N- PLACE PAD (ONLY AVAILABLE ON -SV) IF POLARIZATION OCCURS AT CENTER POSITION(S) OF BODY, MOVE PICK-IN-PLACE PAD LEFT OR RIGHT TO NEXT AVAILABLE POSITION.
 - TR: TAPE AND REEL (29 POSITIONS MAX)
 - K: POLYIMIDE FILM PAD (AVAILABLE ON POS. 2 THRU 36 ONLY) (.005 [.13] THICKNESS WITH SILICONE ADHESIVE) (SEE FIG 5, SHT 2) (USE K-500-300) (NOT AVAILABLE ON -SH AND -DH ROW OPTIONS)
- POLARIZING OPTION
- XX = POSITION TO BE POLARIZED (USE PK-06-N) (SEE FIG. 9 SHEET 2 FOR POLARIZING POSITIONS) (NOT AVAILABLE FOR -BE OPTION)
- MOUNTING OPTION
- LC: LOCKING CLIP (USE 2 LC-05-TM) (SEE NOTE 12) (FOR -SH AND -DH USE MOLDED TO POSITION BODIES)

TABLE 1

BODY/LEAD STYLE	CONTACT #1	CONTACT #2
-SV	C-95-02-X	-----
-SH	C-58-06-X	-----
-DH	C-58-08-X	C-58-07-X

FIGURE 2
HORIZONTAL MOUNT



PROPRIETARY NOTE

THIS DOCUMENT CONTAINS INFORMATION CONFIDENTIAL AND PROPRIETARY TO SAMTEC INC. AND SHALL NOT BE REPRODUCED OR TRANSMITTED TO OTHER DOCUMENTS OR DISCLOSED TO OTHERS OR USED FOR ANY PURPOSE OTHER THAN THAT FOR WHICH IT WAS OBTAINED WITHOUT THE EXPRESSED WRITTEN CONSENT OF SAMTEC INC.

MATERIAL:

BODIES:

PRIMARY: VECTRA E1301

ALTERNATIVE: ZENITE 6130

CONTACTS:

PHOS BRONZE

CA510 SPRING

SSM-1XX-XXX-XX-XX-XX-X-XX-MKTI

samtec

520 PARK EAST BLVD. NEW ALBANY, INDIANA 47150

PHONE (812) 944-8733 P.O. BOX 1147

CODE 55322

MADE BY: KOLB 9-12-91

SSM-1XX-XXX-XX-XX-XX-X-XX

SHEET 1 OF 3