

Two Hole Lugs - 45° Short Barrel 600V Applications

Material: High Conductivity Wrought Copper
Finish: Electro Tin Plate



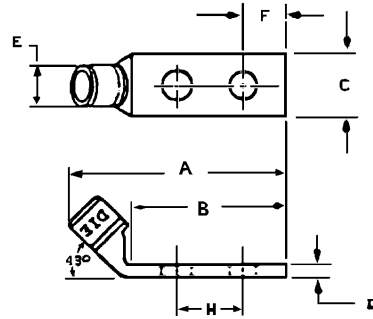
Wire Size ¹		Cat. No.	Bolt Size	Dimensions (in.)							Die Code	Color Key	WP91412 List No.
Code	Flex		G	A	B	C	D	E	F	H			
#14-10 ²		256-31426-9 ³	#10	1 11/16	1 7/32	3/8	1/16	13/64	1/4	5/8	N/A	N/A	
#8	#8 37/24	54204UF	#10	1 17/32	1 1/16	13/32	5/64	1/4	7/32	5/8	21	Red	
#6	#6 61/24	256-30695-1183F ⁴	#10	1 11/16	1 1/8	7/16	5/64	19/64	1/4	5/8-3/4	24	Blue	113
		256-30695-252UF	1/4	2 33/64	1 25/32	37/64	5/64	19/64	3/8	1	24	Blue	
		54205UF	1/4	1 13/16	1 3/16	7/16	7/64	9/32	1/4	5/8	24	Blue	
#4	#4 91/24	54206UF	1/4	1 29/32	1 3/16	9/16	7/64	23/64	1/4	5/8	29	Gray	
#2	125/24	54207UF	1/4	2	1 3/16	19/32	1/8	13/32	1/4	5/8	33	Brown	124
		256-30695-257UF	3/8	2 5/8	1 13/16	19/32	7/64	13/32	3/8	1	33	Brown	
#1	#2 150/24 175/24	54208UF	1/4	2 1/16	1 3/16	43/64	1/8	15/32	1/4	5/8	37	Green	
1/0	225/24	256-30695-329UF	1/4	2 1/4	1 5/16	3/4	9/64	17/32	1/4	3/4	42	Pink	139
		54209UF	3/8	2 3/4	1 13/16	3/4	9/64	17/32	3/8	1	42	Pink	
2/0	1/0 275/24	54210UF	3/8	2 13/16	1 13/16	13/16	9/64	37/64	3/8	1	45	Black	
3/0	2/0 325/24	54211UF	3/8	2 15/16	1 13/16	15/16	9/64	5/8	3/8	1	50	Orange	
4/0	450/24	54212UF	3/8	3 1/16	1 13/16	1 1/32	5/32	45/66	3/8	1	54	Purple	
		256-30695-399UF	3/8	4 3/32	2 13/16	1 1/4	3/16	27/32	9/16	1	62	Yellow	
		256-30695-835UF	3/8	3 3/8	1 7/8	1 3/16	3/16	27/35	1/2	1	62	Yellow	
350 MCM		256-30695-1210	7/16	5 35/64	4 3/32	1 1/4	5/32	27/32	3/8	1	62	Yellow	
		54215UF	3/8	3 9/16	1 13/16	1 3/8	13/64	15/16	9/16	1	71	Red	44
		54282UF	1/2	4 3/16	2 13/16	11/32	13/64	59/64	1/2	1 3/4	71	Red	82
	350 925/24	58277UF	1/2	4 9/16	2 13/16	1 5/8	1/4	1 3/32	9/16	1 3/4	80	N/A	35
500 MCM		54218UF	3/8	3 9/16	1 13/16	1 5/8	1/4	1 3/32	9/16	1	87	Brown	68
		54286UF	1/2	4 9/16	2 13/16	1 39/64	7/32	13/32	1/2	1 3/4	87	Brown	90
		256-30695-1219	1/2	4 1/16	2 5/16	1 39/64	7/32	1 7/64	1/2	1 1/4	87	Brown	
500 1325/24		58281UF	1/2	4 11/16	2 13/16	1 25/32	9/32	1 1/4	1/2	1 3/4	99	Pink	
		58282UF	1/2	3 1/4	2 13/16	1 25/32	9/32	1 1/4	1/2	1 3/4	99	Pink	42

Color-Keyed®

Connectors for All Copper Cables

Two Hole Lugs - 45° Short Barrel 600V Applications (continued)

Material: High Conductivity Wrought Copper
Finish: Electro Tin Plate



Wire Size ¹		Cat. No.	Bolt Size G	Dimensions (in.)								Die Code	Color Key	WP91412 List No.
Code	Flex			A	B	C	D	E	F	H				
750 MCM		256-30695-1222F ³	3/8	4 1/2	2 7/8	1 15/16	17/64	1 11/32	1/2	1	106	Black		
		256-30695-237UF	3/8	4 5/8	2 3/4	1 15/16	9/32	1 21/64	3/8	1	106	Black		
		54223UF	1/2	4 11/16	2 13/16	1 15/16	5/16	1 21/64	13/16	1 3/4	106	Black	72	
900 MCM	750 1925/24	54226UF	1/2	5 1/16	2 7/8	2 3/16	11/32	1 1/2	7/8	1 3/4	115	Yellow	49	
1000 MCM		54228UF	1/2	5 29/64	3	2 17/64	19/64	1 35/64	1/2	1 3/4	125	N/A		

U.L. and C.S.A. listing of T&B connectors is a continual process - please call customer service for the latest listings.

Undrilled tongues are available on many tongue sizes - please call customer service for availability.

1. Call customer service for sizes not listed.
2. #14 - #10 AWG lugs must be crimped with the "C" nest when using the ERG2002 OR WT1377 hand tool.
3. Long barrel.
4. Bolt hole slotted to provide range of bolt hole spacing (H).

For tool and die selection see page F44.