

**Consistent Narrow Width from Barrel to
Tongue Fits Perfectly in Tight Spaces!**

Now Available
Two-Hole and
Angled Lugs!

Color-Keyed[®]
Narrow-Tongue Lugs



Standard-Tongue Lug



Narrow-Tongue Lug



Colored-Keyed® Narrow-Tongue Lugs

Ideal for Confined-Space Terminations!

To meet increasing demand for smaller components in today's panels and switchgear, Thomas & Betts has expanded its line of Color-Keyed® Narrow-Tongue Lugs to include two-hole and angled lugs. These improved lugs have been precision engineered for consistency in width the entire length of the connector, from barrel to tongue, ensuring a reliable fit in confined-space applications.

- Narrow-width tongue and barrel, engineered for dimensional consistency the entire length of the lug
- Perfect for connections in limited-space applications
- High-conductivity copper alloy construction
- Electro-tin-plated finish resists corrosion
- T&B Color-Keyed® marking system makes connections and verification easy
- Double-chamfered barrel eases insertion of wire

Specifications

Rating: 600V
Material: 99% pure high-conductivity seamless wrought copper
Finish: Electro-tin plated
Standards: UL Listed to UL486A/B, CSA Certified to C22.2 No. 65-03, RoHS compliant

Ideal for use in:

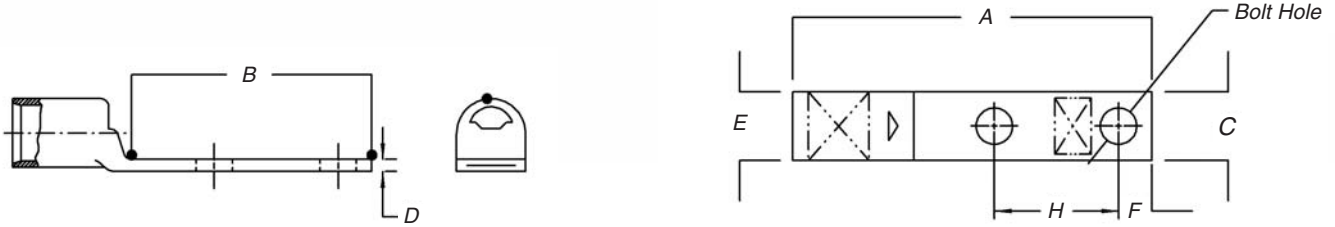
- Panels
- Switchgear
- Molded-case circuit breakers
- Motor starters
- Other limited-space OEM applications



Now Available in:

- One-hole
- Two-hole
- Straight
- 45° Angled
- 90° Angled





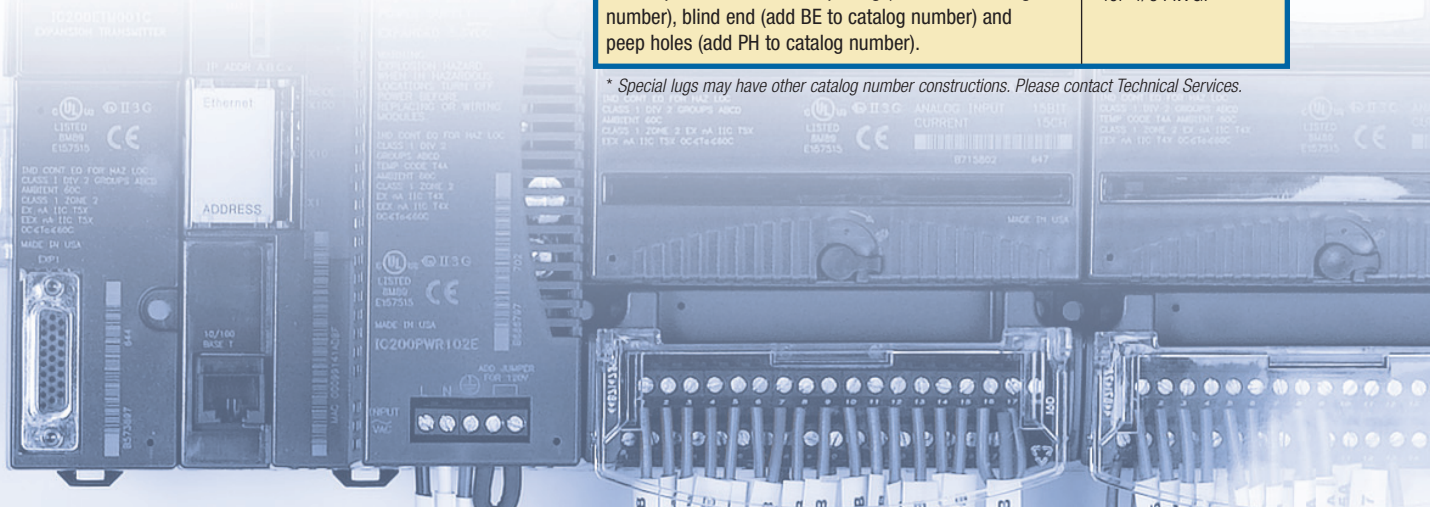
Narrow-Tongue Copper Lugs — Two-Hole, Standard Barrel

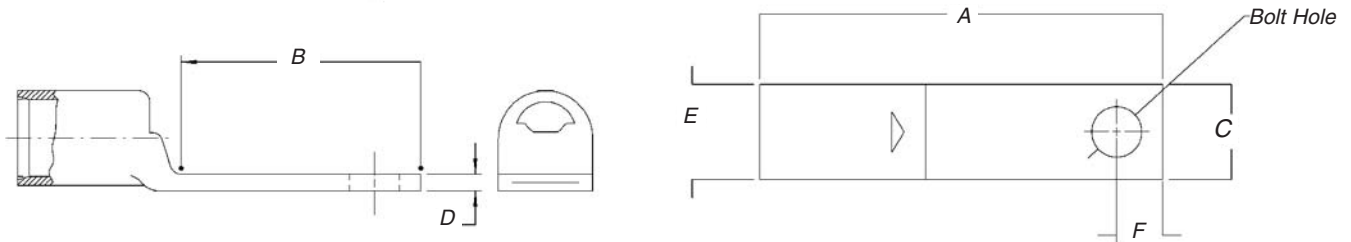
Cat. Number	Wire Size		Bolt Size	Dimensions (in.)								Std. Pkg. Qty.	UPC Number	Die Code	Die Color
	Code	Flex Class G, H, I, K, M†		A	B	C	D	E	F	H					
54206NT0310	#4 AWG	91/24	#10	1.88	1.13	.37	.10	.37	.25	.63	50/500	786209-89474	29	GRAY	
54207NT	#2-3 AWG	125/24	¼	2.04	1.19	.41	.11	.41	.25	.63	25/250	786209-89202	33	BROWN	
54207NT0412	#2-3 AWG	125/24	¼	2.16	1.31	.41	.11	.41	.25	.75	25/250	786209-89472	33	BROWN	
54207NT0416	#2-3 AWG	125/24	¼	2.41	1.56	.41	.11	.41	.25	1.00	25/250	786209-89469	33	BROWN	
54208NT	#1 AWG	150,175/24	¼	2.04	1.19	.47	.11	.47	.25	.63	20/200	786209-89203	37	GREEN	
54208NT0516	#1 AWG	150,175/24	⅝	2.63	1.78	.47	.11	.47	.38	1.00	20/200	786209-89467	37	GREEN	
54255NT	1/0 AWG	225/24	⅝	2.61	1.66	.52	.14	.52	.38	.88	10/100	786209-89466	42	PINK	
54261NT	2/0 AWG	275/24	⅝	2.66	1.66	.57	.14	.57	.38	.88	10/100	786209-89464	45	BLACK	
54210NT	2/0 AWG	275/24	⅝	2.82	1.82	.57	.14	.57	.38	1.00	10/100	786209-89464	45	BLACK	
54266NT	3/0 AWG	325/24	⅝	2.88	1.78	.63	.13	.63	.38	1.00	10/100	786209-89456	50	ORANGE	
54211NT	3/0 AWG	325/24	⅝	2.92	1.82	.63	.13	.63	.38	1.00	10/100	786209-89455	50	ORANGE	
54212NT	4/0 AWG	450/24	⅝	3.07	1.82	.70	.14	.70	.38	1.00	10/100	786209-89454	54	PURPLE	
54213NT	250 MCM	550/24	⅝	3.17	1.82	.77	.14	.77	.38	1.00	10/100	786209-89453	62	YELLOW	
54275NT	250 MCM	550/24	⅝	4.16	2.81	.77	.14	.77	.50	1.75	10/100	786209-89452	62	YELLOW	
54282NT	350 MCM	—	½	4.36	2.81	.93	.18	.93	.50	1.75	10/100	786209-89451	71H	RED	
54218NT	500 MCM	925/24	⅝	4.57	2.57	1.10	.22	1.10	.38	1.75	6/60	786209-89450	87	BROWN	
54286NT	500 MCM	925/24	½	4.81	2.81	1.10	.22	1.10	.50	1.75	6/60	786209-89449	87	BROWN	
54878BENTPH	600 MCM	—	½	5.83	3.00	1.20	.24	1.20	.50	1.75	6/60	786209-89301	94	GREEN	
54223NT0628	750 MCM	1325/24	⅝	4.79	2.57	1.33	.27	1.33	.38	1.75	6/60	786209-89444	106H	BLACK	
54223NT	750 MCM	1325/24	½	5.04	2.81	1.33	.27	1.33	.50	1.75	6/60	786209-89437	106H	BLACK	
58884BENTPH	—	1600/24	½	6.16	3.00	1.33	.24	1.20	.50	1.75	6/60	786209-89300	106H	BLACK	

Note: Catalog Nos. 54878BENTPH and 58884BENTPH include peep holes.
 † Contact Technical Services for specific stranding listings.

<p>Cat. No. Type</p> <p>54212NT *</p> <p>— = To Order 45° and 90° Angle Lugs</p> <p>UF = 45°</p> <p>UB = 90°</p> <p>Other options include silver plating (add SP to catalog number), blind end (add BE to catalog number) and peep holes (add PH to catalog number).</p>	<p>Catalog No. Example:</p> <p>54212NTUF is a 45° angled two-hole narrow-tongue lug for 4/0 AWG.</p>
---	---

* Special lugs may have other catalog number constructions. Please contact Technical Services.





Narrow-Tongue Copper Lugs — One-Hole, Standard Barrel

Cat. Number	Wire Size		Bolt Size	Dimensions (in.)							Std. Pkg. Qty.	UPC Number	Die Code	Die Color
	Code	Flex Class G, H, I, K, M†		A	B	C	D	E	F	H				
54138NT	#4 AWG	91/24	#10	1.31	.56	.37	.10	.37	.25	—	50/500	786209-87251	29	GRAY
54107NT	#2-3 AWG	125/24	¼	1.50	.65	.41	.07	.41	.25	—	25/250	786209-86793	33	BROWN
54108NT	#1 AWG	150,175/24	¼	1.50	.65	.47	.11	.47	.25	—	20/200	786209-86792	37	GREEN
54152NT	1/0 AWG	225/24	¼	1.60	.65	.52	.13	.52	.25	—	10/100	786209-86791	42	PINK
54157NT	2/0 AWG	275/24	¼	1.60	.65	.57	.13	.57	.25	—	10/100	786209-86790	45	BLACK
54162NT	3/0 AWG	325/24	¼	1.68	.65	.63	.13	.63	.25	—	10/100	786209-86789	50	ORANGE
54167NT	4/0 AWG	450/24	¼	1.90	.65	.70	.14	.70	.25	—	10/100	786209-86788	54	PURPLE
54172NT	250 MCM	550/24	¼	2.00	.65	.77	.14	.77	.25	—	10/100	786209-86787	62	YELLOW
54178NT04	300 MCM	775/24	¼	2.33	.88	.85	.15	.85	.25	—	10/100	786209-86786	66	WHITE
54115NT	350 MCM	—	½	2.75	1.25	.93	.18	.93	.50	—	10/100	786209-86785	71H	RED
54115NT06	350 MCM	—	¾	2.50	1.00	.93	.18	.93	.38	—	10/100	786209-86784	71H	RED
54118NT	500 MCM	925/24	½	3.25	1.25	1.10	.22	1.10	.50	—	6/60	786209-86783	87	BROWN
54123NT08	750 MCM	1325/24	½	3.48	1.25	1.33	.27	1.33	.50	—	6/60	786209-86782	106H	BLACK
54123NT	750 MCM	1325/24	¾	3.80	1.58	1.33	.27	1.33	.63	—	6/60	786209-86781	106H	BLACK
54879NT	750 MCM	—	¾	5.00	2.02	1.66	.27	1.33	.38	—	6/60	786210-71581	106H	BLACK
58825NT	900 MCM	—	¾	5.00	2.13	1.66	.31	1.50	.50	—	3/30	786210-06740	115	YELLOW
58825NT0828	900 MCM	1925/24 = 777 kcmil	¾	5.75	2.88	1.66	.31	1.50	.50	—	3/30	786210-37843	115	YELLOW

† Contact Technical Services for specific stranding listings.

<p>Cat. No. Type</p> <p>54108NT *</p> <p> — = To Order 45° and 90° Angle Lugs</p> <p> UF = 45°</p> <p> UB = 90°</p> <p>Other options include silver plating (add SP to catalog number), blind end (add BE to catalog number) and peep holes (add PH to catalog number).</p>	<p>Catalog No. Example:</p> <p>54108NTUB is a 90° angled one-hole narrow-tongue lug for #1 AWG.</p>
---	--

* Special lugs may have other catalog number constructions. Please contact Technical Services.

www.tnb.com

Thomas & Betts

Please ask your Thomas & Betts sales representative for a complete catalog of quality Thomas & Betts electrical products or visit us at www.tnb.com. For customer service, call 1-800-816-7809. For technical questions, call 1-888-862-3289.

Thomas & Betts Corporation
 Electrical Division
 8155 T&B Boulevard
 Memphis, TN 38125
 901-252-5000

Thomas & Betts Ltd.
 700 Thomas Avenue
 Iberville, Québec J2X 2M9
 450-347-5318