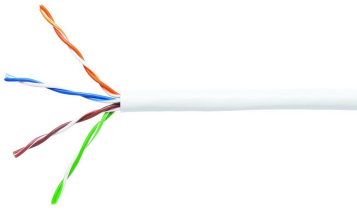


6-219538-2



510 Series Copper Cable, category 5e, 4 pr., UTP, 200 MHz, CMR rated, 24 AWG, 1000 ft pull-box, white

OBSOLETE

Replaced By:

6-57826-2
CS24R WHT C5E 4/24 U/UTP CPK 1KFT Copper Cable, category 5e, 4 pair, UTP, 350 MHz, CMR rated, 1000 ft pull-box, white

Product Classification

Regional Availability	Asia Latin America North America
Portfolio	CommScope®
Product Type	Twisted pair cable
Product Series	510 Series

General Specifications

Product Number	510R
ANSI/TIA Category	5e
Cable Component Type	Horizontal
Cable Type	U/UTP (unshielded)
Conductor Type, singles	Solid
Conductors, quantity	8
Jacket Color	White
Pairs, quantity	4
Transmission Standards	ANSI/TIA-568.2-D CENELEC EN 50288-6-1 ISO/IEC 11801 Class D

Dimensions

Cable Length	304.8 m 1000 ft
Diameter Over Jacket, nominal	4.699 mm 0.185 in

6-219538-2

Conductor Gauge, singles 24 AWG

Electrical Specifications

Operating Voltage, maximum 80 V

Remote Powering Fully complies with the recommendations set forth by IEEE 802.3bt (Type 4) for the safe delivery of power over LAN cable when installed according to ISO/IEC 14763-2, CENELEC EN 50174-1, CENELEC EN 50174-2 or TIA TSB-184-A

Safety Voltage Rating 300 V

Material Specifications

Conductor Material Bare copper

Insulation Material Polyolefin

Jacket Material PVC

Environmental Specifications

Operating Temperature -20 °C to +60 °C (-4 °F to +140 °F)

Environmental Space Non-plenum

Flame Test Method CMR

Packaging and Weights

Cable weight 35.716 kg/km | 24 lb/kft

Packaging Type Pull box

Regulatory Compliance/Certifications

Agency	Classification
CHINA-ROHS	Below maximum concentration value
REACH-SVHC	Compliant as per SVHC revision on www.commscope.com/ProductCompliance
ROHS	Compliant

