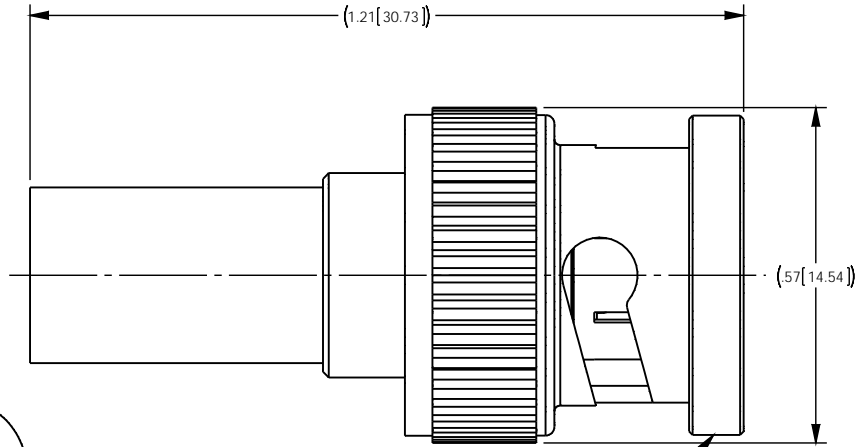


NOTES: UNLESS OTHERWISE SPECIFIED

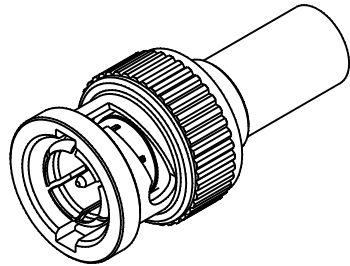
1. FOR USE WITH BELDEN 9529, 1505A & 1805F CABLES.
2. FOR CABLING INSTRUCTIONS SEE 3-661-1.
3. FOR CABLE TRIMMING USE KTJ-57 & KTD-26.
4. FOR CRIMPING USE DIE KTH-2261.
5. INTERFACE PER MIL-STD-348 SERIES TNC, SOCKET CONTACT, 75 OHM.
6. MATERIAL SPECIFICATION:
 INSULATOR: TEFLON, ASTM-D-4894 OR ASTM D1710
 GASKET: SILICONE RUBBER, A-A-59588
 SPRING WASHER, OUTER CONTACT: BERYLLIUM COPPER PER ASTM B196
 ALL OTHER METAL PARTS: BRASS PER ASTM B16
7. FINISH SPECIFICATIONS:
 CENTER CONTACT: .000050 MIN GOLD PER ASTM B488 OVER .000050 MIN NICKEL PER AMS-QQ-N-290(RoHS)
 SPRING WASHER: .000200 MIN SILVER PER ASTM B700 OVER .000020 MIN COPPER PER ASTM B734 RoHS)
 ALL OTHER METAL PARTS: .000050 MIN NICKEL PER AMS-QQ-N-290 OVER .000050 MIN COPPER PER ASTM B734(RoHS)
8. ELECTRICAL SPECIFICATIONS:
 NOMINAL IMPEDANCE- 75 OHMS
 WORKING VOLTAGE- 500 VOLTS RMS
 FREQUENCY RANGE- DC TO 6 GHz
 RETURN LOSS: UP TO 1.5GHz, <-30dB
 UP TO 3.0GHz, <-22dB
 UP TO 6.0GHz, <-18dB
9. COMPLIANT TO SMPTE 424M (3G-SDI) SPECIFICATION.

REV	DESCRIPTION	BY DATE	APPD
N	ER045518	KFM 01/27/13	DCAM



MARK: KINGS 2065-2-2-9 (DATE CODE)

CATALOG P/N: 2065-2-9



PER ASME Y14.5M-1994 UNLESS OTHERWISE SPECIFIED: DIMENSIONS ARE IN INCHES (MM) TOLERANCES: DECIMAL: .XX [XX] ± .01 [0.25] .XXX [X.XX] ± .004 [0.10] .XXXX [X.XXX] ± .00XX ANGLES: ± 2° SCALE: X:X				 by WINCHESTER <small>Winchester Electronics Corporation 199 Park Road Ext Suite 104 Middlebury, Connecticut 06762</small>	
CUSTOMER SALES DRAWING			THIRD ANGLE 		
PLUG, 75 BNC					
DRAWN	DATE	APPROVED	DATE	SHT	OF
TJA	01/11/99	DCJ	01/11/99	1	1
APPROVED	DATE	APPROVED	DATE	REV	
XXX	XX/XX/XX	XXX	XX/XX/XX	A	